



# Tokens

---

## Accessories

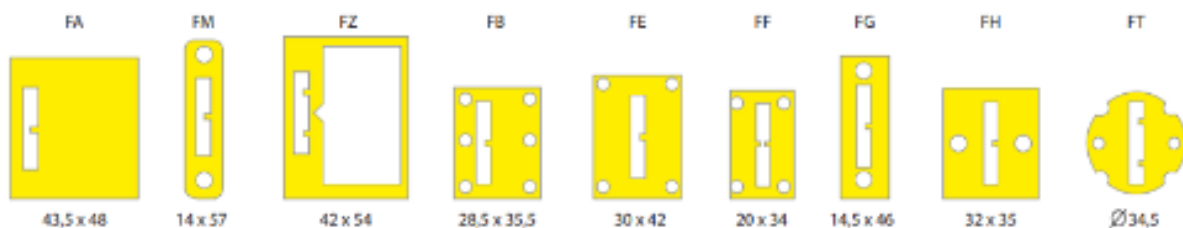


Over 70 different models, designed to guarantee perfect discrimination and selection, using only the best materials. The monometallic and bimetallic tokens, made from special long lasting alloys, are designed for intensive use on machines with electronic coin validators.

The grooved tokens on the other hand, made from copper and nickel plated steel, are ideal for machines with mechanical coin validators: coin entry plates suited to each token are available for these applications. What's more, each model can be customised by diameter, thickness and coining to be truly distinctive while adding value to the customer's activity: upon request, tokens can be marked with a message or company logo, in relief or in negative, to make them even more prestigious.

### Coin entry covers

Different coin entry plates are available according the token to be inserted





## Wide range of tokens to satisfy every needs

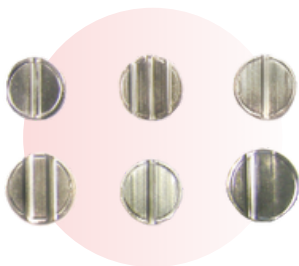


### Monometallic

- Particularly sturdy and wear-resistant thanks to the long-lasting materials with which they are made: whit brass alloy, nickel-silver, iron or zama
- Diameter from 18 to 31 mm

### Bimetallic

- Consisting of a core and a copper alloy surrounding ring: the colour contrast creates an exclusive special effect
- Diameter from 26 to 27 mm (other sizes upon request)



### Grooved

- Made of iron or zama, they have one or more grooves on either the front or back
- Diameter from 22 to 27.8 mm

### Themes

4 different graphic theme availables: zodiac, cars, historical monuments and African animals

