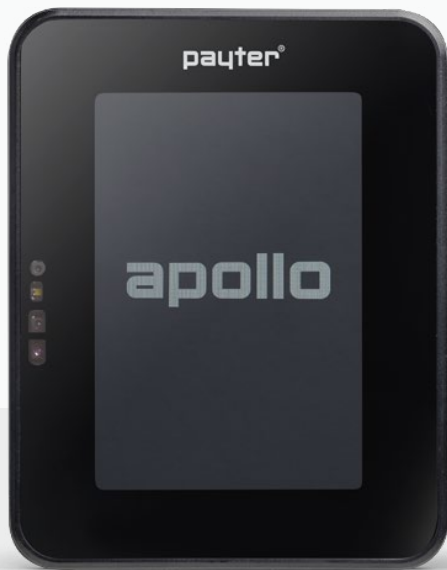


Payter Apollo Cashless Payment



Improve user experience and increase acceptance with our Apollo unattended terminals. Based on a secure Linux platform with an integrated PIN pad, 4G Modem, Barcode Scanner and flexible integration options.

Features

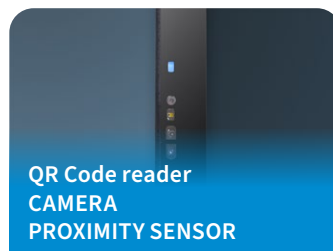
- Ultra Slim
- 3.5 " Touch Screen
- 4G, WiFi, BlueTooth, LAN, Serial, USB
- QR Code/Barcode scanner
- Speaker / Proximity sensor
- EMV
- Plug & Play
- Loyalty & Closed loop systems
- Telemetry
- Advertising
- Vandal Proof, Robust, Waterproof
- Low power
- Supports PIN entry
- Remote management via on-line back-office
- PCI 6.x
- Linux based
- Mounting behind glass front possible
- EVA mounting



PCI 6.x Certified
SUPPORT PIN ENTRY



SMALL FOOTPRINT



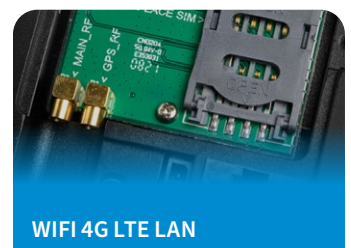
QR Code reader
CAMERA
PROXIMITY SENSOR



IK09
VANDALPROOF



CUSTOMISE YOUR TERMINAL

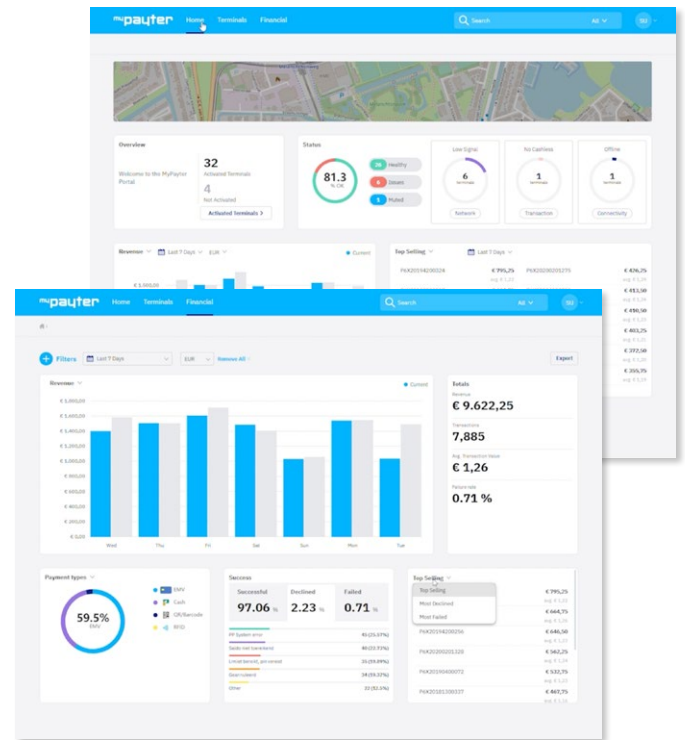


WIFI 4G LTE LAN

Payter Apollo Cashless Payment

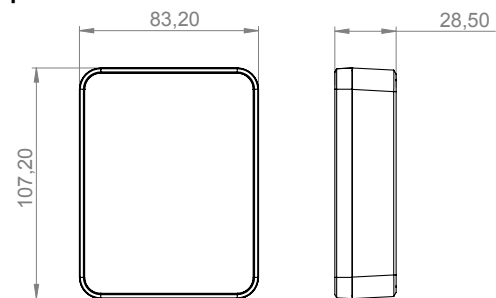
Terminal Management System

- Remote management of large estates of Payter Terminals
- Efficient deployment through Remote Key Injection, configuration, updates and payment device firmware
- Future proof system in which changes in functionality can be applied easily, safely, and quickly, while reducing the Cost of Ownership
- Continued EMV compliance
- Avoid expensive Visits
- Simplification of the logistics processes
- Easy roll-out process
- Easy addition of new services

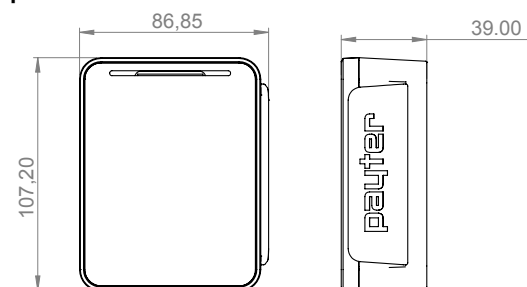


Dimensional Drawings

Apollo



ApolloMAX



Real-time Information

- Reporting of revenue including Cashless, Closed Loop (RFID) and Cash Transactions
- Product Sales Data
- Detailed monitoring of connections and errors
- Full control over your estate of terminals
- Free of Charge API available for direct download of the sales data into your ERP or Telemetry system

Telemetry

Payter Telemetry enables you to remotely monitor your machines by continually providing fresh data about:

- Product movement
- Cash inventory
- The physical condition of the machines
- Transaction reporting for easy reconciliation

Technical Specifications

Contactless Interface	EMVCo. L1 v3.0 Certified; ISO14443 Type A & B (T=CL); Mifare Classic protocol; Desfire protocol; ISO18092: Support NFC Protocol
Contact Card Interface*	EMV L1 v4.3 Certified
Integrated MSR*	3 Track
CPU	ARM Cortex A7 Core Operating at 528MHz with ARM; TrustZone technology
Memory	256 MB, DDR3-800; 8GB eMMC, high-speed DDR
Peripheral ports	USB Type C, dual role port capable of powering, expansion modules
Communication ports	RJ45 connector; Ethernet (100BASE TX, 10base-10) network port; IEEE802.11b/g/n W-LAN; GSM/GPRS/LTE CAT 1 MODEM (optional); GNSS, (GPS) support with modem
Expansion modules (optional)	Pulse I/O Expansion Module; RS232 interface Extension Module
Environmental	Operating temperature -20 - 55°C; Storage Temperature -20 - 70°C; Humidity 10 – 90% RH Non-condensing; Apollo: IP 65 Front; ApolloMax: IP 50 Front; IK 09 Vandal proof
Operating Distance	Depending on the card/token up to 10 cm from Reader
Compliances	CE, FCC, RoHS, WEEE; EMVCo, PCI-PTS 6.x; MasterCard, VISA, American Express, Discover, Diners
LED indicators	4 RGB LEDs
Display	3.5" IPS LCD Display, 320x480 with Backlight 256K Color palette, Capacitive Touch screen interface
Barcode Reading	Integrated camera supporting QR code scanning
Audio	Internal speaker, Mono audio playback, Buzzer
Integrated Sensor	Ambient Light sensor, Proximity Sensor
Dimensions	European Vending Association Compliant Frame Apollo 83.2 x 107.2 x 28.5 mm (LxWxH) - ApolloMax 86.5 x 107.2 x 39.5 mm (LxWxH)
Color	Black, White
Power Supply	110 – 230 VAC, Power Supply with 1.5m cable. MDB port 12–24VDC

*ApolloMax only