



# Your Trusted Hardware Partner!

Sports Betting • Cashless • Gaming

# Global Reach, Local Availability, Quality Products.

SUZOHAPP serves bingo operators with a vast variety of aftermarket parts and solutions. As a parts expert, we help keep your revenue stream uninterrupted by providing high quality components for increased machine performance, upgrades, and easy-to-install 1:1 replacements. SUZOHAPP has maintained a long legacy of quality products and

high-level customer service. We take pride in our global network of vendors, suppliers, and partners. Together, we can source, distribute, and offer thousands of products in order to better serve our increasingly global customer-base. Make SUZOHAPP your first call and it will be the only call you'll need to make.



COMPETITIVE  
PRICES



FAST  
DELIVERY



CUSTOMIZED  
PRODUCTS

We commit to not just selling items to you, we commit to a relationship. We are more than just a ready supply of aftermarket parts and quick customization capabilities; we are a focused, knowledgeable partner in the gaming, amusement and sport betting industries eager to help your business succeed.

## About US

SUZOHAPP is a world leader in the manufacturing and distribution of gaming, amusement, and sports betting products. Serving operators and OEMs for over 60 years, SUZOHAPP carries a vast portfolio of components available for immediate distribution and for developing custom built solutions. More information, along with a comprehensive online components catalogue, is available at [www.suzohapp.com](http://www.suzohapp.com).



# Index



## **Consumable's** ..... pp 4

- Thermal ATM Rolls
- Tito Tickets
- Cash Bags



## **Coin Cups & Holders** ..... pp 5



## **Cleaning** ..... pp 6



## **Stools** ..... pp 7

- The Carrillo



## **Lighting** ..... pp 7

- T12 Fluorescent Lamps
- Wedge Base LEDs 5mm
- Wedge Base Cluster LEDs 10mm
- Wedge Base Lamps 5mm
- Wedge Base Lamps 10mm



## **Locks & Security** ..... pp 10

- Assa Desmo
- VENIA
- STC
- Xlocks
- Giussani
- Germatic
- Ket-Bak



## **Note Validators** ..... pp 12

- NV9 Spectal
- NV10 USB+



## **Change Machines** ..... pp 12

- Dual Change Cashless



## **Note and Coin Counters & Sorters** ..... pp 13

- SC-8220
- K2
- SC-303
- ICX Active-9
- SC-350
- SC-360



## **Cabinets** ..... pp 16

- SBT-1000
- SBT-500
- SBT-OTC



## **Monitors** ..... pp 19

- Elo Open-Frame Touch Monitors



# Thermal ATM Rolls



- PART N.
- 146-0169 *White Thermal ATM Rolls*
  - 146-0168-1 *Pink Thermal ATM Rolls*
  - 146-0168 *Blue Thermal ATM Rolls*

# Tito Tickets



- PART N.
- T100006 *Tito Ticket*
  - T100015 *Tito Ticket*
  - T100020 *Tito Ticket*

- Stacks of 600
- 100 per box 12000 (minimum 1 box)

CAN BE PERSONALISED!



# Coloured Coin Bags

- PART N.
- |                          |                           |
|--------------------------|---------------------------|
| 185-0800-02 <i>Red</i>   | 185-0800-04 <i>Yellow</i> |
| 185-0800-05 <i>Green</i> | 185-0800-06 <i>Blue</i>   |
| 185-0800-09 <i>White</i> |                           |

- 5 different colours for easy identification
- Size: 35x25mm





# Coin Cups

- PART N.
- 39-0540 Cupholder for 500cc cups x 500
  - 39-0541 Cupholder for 300cc cups
  - 39-0528 Good Luck Coin Cup x 500
  - 39-0529 300cc Coin Cup x 1,000

- ▶ Made of strong, durable and resistant plastic
- ▶ Stack easily
- ▶ Available in 2 sizes: 300cc (100xh60 mm) and 500cc (115xh70 mm)



CUSTOMIZE  
YOUR CUPS!



Minimum order  
quantity with  
customized artwork:  
25,000 pcs



## Aerosols / Ambersil

A dry graphite lubricant for long lasting, smooth lock operation. The microscopic grains of graphite ensure good penetration and effective anti-seize lubrication.

- ▶ Long lasting lubrication
- ▶ Dry film does not attract dirt and grime
- ▶ Excellent water resistance
- ▶ Wide operating temperature range
- ▶ Works even when lock has mild corrosion



Glass Cleaner

PART N.  
20-0074



Label Remover

PART N.  
20-0078



Air Duster

PART N.  
20-0077-2



Ambersilens

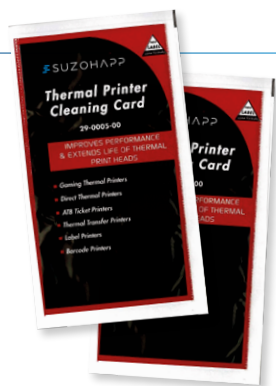
PART N.  
20-0070



Multi-surface Polish

PART N.  
20-0083

Many More Ambersil Products Available



## Thermal Printer Cleaning Cards

PART N.  
29-0005-00

- Improves print quality and legibility
- Protects your equipment - increases printer life, reliability and performance
- Works on all thermal printers
- Use before inserting each roll of paper
- Safely removes all dirt, ink, tape, residue, adhesive and other contaminants from thermal print heads, paper guides and paper path
- Sold per piece



## Note Acceptor Cleaning Cards

PART N.  
29-0329-20

- Works in most bill validators; highest acceptance of any cleaning card
- Dramatically outperforms normal flat cleaning cards
- Incorporates flexible, raised platforms on the top and bottom surfaces
- Springs up into surface cavities to clean recessed sensors
- Cleans entire rounded surface of magnetic heads and optical lenses
- Ten times higher cleaning pressure, cleaning in both directions; alcohol-free
- Sold in box of 15 pieces

## Alcohol Free Cleaning Card

PART N.  
29-1167-00

- Protect your equipment
- Removes dirt, oil, and other contaminants from magnetic heads and photo and optic sensors
- Safe, easy and effective
- Will not harm rubber belts
- Will not fog up optic sensors
- Sold in boxes of 50



## Card Reading Cleaning Cards

PART N.  
29-0329-10

- Dramatically outperforms normal flat cleaning cards
- “Wave Waffle technology” design to gently but firmly roll along the magnetic heads, cleans the leading, top, and trailing edge
- Reaches into the reader pathway where dirt builds up and migrates to the magnetic heads
- “Reinforcement Technology” designed to ensure stability of cleaning card
- 019 thick version; Color: white; alcohol
- Sold in box of 40 pieces





## The Carrillo

PART N.

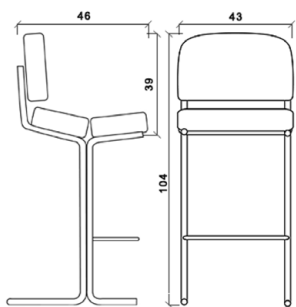
39-0084-1 *The Carrillo*

39-0084-1A *Bebe Carrillo*

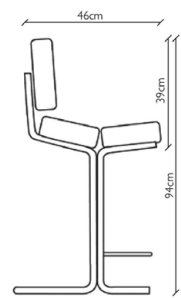
- ▶ Eco leather fire-retardant (certificate 300,000 cycles wear resistance)
- ▶ Padded ergonomic polyurethane foam to varying hardness
- ▶ Structure in reinforced steel with welding anti-break
- ▶ Finished chromium (three chromium)
- ▶ Available in height 73cm for high cabinet or 55cm ideal for slant top
- ▶ Exceeded the following tests and certifications: durability test seat and back - drop test - footrest fatigue resistance to fatigue armrest - stability test
- ▶ Personalized artwork available



AVAILABLE IN TWO SIZES



**The Carrillo**  
39-0084-1



**Bebe Carrillo**  
39-0084-1A



## Fluorescent Lamps

- ▶ 70% of all artificial light in the world is generated by fluorescent lamps
- ▶ A fluorescent lamp consumes only about one fifth of the electricity used by an ordinary light bulb
- ▶ OSRAM, PHILIPS and SYLVANIA are the three largest manufacturers of lighting components in the world
- ▶ Colour cool white
- ▶ Average life time of the fluorescent tubes is 12000 hours

PART N.	DESCRIPTION	WATT	LENGHT	PACKING
F4T5CW	Lamp T5	4W	6" - 15cm	25
F6T5CW	Lamp T5	6W	9" - 23cm	25
F8T5CW	Lamp T5	8W	12" - 30cm	25
F13T5CW	Lamp T5	13W	21" - 53cm	25
F10T8CW	Lamp T8	10W	13" - 33cm	50
F14T8CW	Lamp T8	14W	15" - 38cm	25
F15T8CW	Lamp T8	15W	18" - 46cm	25
F16T8CW	Lamp T8	16W	29" - 73.5cm	25
F18T8-133ST	Lamp T8	18W	24" - 61cm	24
F18T8K24CW	Lamp T8	18W	24" - 61cm	25
F18T8K26CW	Lamp T8	18W	26" - 66cm	24
F18T8K28CW	Lamp T8	18W	28" - 71cm	24
F18T8K30CW	Lamp T8	18W	30" - 76cm	24
F30T8CW	Lamp T8	30W	36" - 91.5cm	25
F36-133ST	Lamp T8	36W	48" - 120cm	25
F20T12CW	Lamp T12	20W	24" - 61cm	25
F25T12-28CW	Lamp T12	25W	28" - 71cm	30
F25T12-30CW	Lamp T12	25W	30" - 76cm	30
F25T12-33CW	Lamp T12	25W	33" - 84cm	30

Fluorescent tubes are only sold per box!





## Wedge Base LEDs 5mm

PART N.

161-205052 5mm 5V Red	161-212055 5mm 12V Green
161-205054 5mm 5V Yellow	161-212059 5mm 12V White
161-205055 5mm 5V Green	161-224052 5mm 24V Red
161-205056 5mm 5V Blue	161-224054 5mm 24V Yellow
161-205059 5mm 5V White	161-224055 5mm 24V Green
161-212052 5mm 12V Red	161-224056 5mm 24V Blue
161-212054 5mm 12V Yellow	161-224059 5mm 24V White

- ▶ LEDs of 5mm – T 1-1/2
- ▶ Available in 5 – 12 and 24V
- ▶ Wide viewing angle
- ▶ Available in 5 colours: Red, Yellow, Green, Blue and White
- ▶ White LEDs colour sorted per box

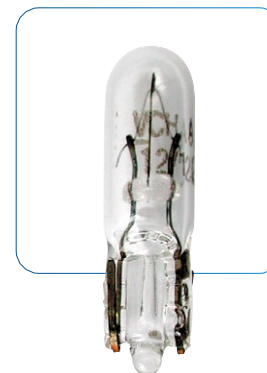
## Wedge Base Cluster LEDs 10mm

PART N.

161-205103-2 5V 10mm Red	161-212103-6 12V 10mm Blue
161-205103-4 5V 10mm Yellow	161-212103-9 12V 10mm White
161-205103-5 5V 10mm Green	161-224103-2 24V 10mm Red
161-205103-6 5V 10mm Blue	161-224103-4 24V 10mm Yellow
161-205103-9 5V 10mm White	161-224103-5 24V 10mm Green
161-212103-2 12V 10mm Red	161-224103-6 24V 10mm Blue
161-212103-4 12V 10mm Yellow	161-224103-9 24V 10mm White
161-212103-5 12V 10mm Green	



- ▶ Cluster of 3 LEDs in 10mm housing
- ▶ Available in 5 – 12 and 24V
- ▶ Wide viewing angle
- ▶ Available in 5 colours: Red, Yellow, Green, Blue and White
- ▶ White LEDs colour sorted per box



## Wedge Base Lamps 5mm

- ▶ 5mm – T-1-1/2
- ▶ Available in Red, Yellow, Green and Blue

PART N.	VOLT	AMP	LIFE	PACKING
LAM-2305	6	0.16	2500	100
LAM-2306	6	0.03	3000	100
LAM-286	12	0.10	1000	100
LAM-2321	12	0.08	5000	100
LAM-1179	12	0.11	15.000	100
LAM-2391	14	0.22	500	25
LAM-2341	24	0.03	5000	100

## Wedge Base Lamps 10mm

- ▶ 10mm – T-3-1/4
- ▶ Available in Red, Yellow, Green and Blue

PART N.	VOLT	AMP	LIFE	PACKING
LAM-2501	6	0.33	7000	100
LAM-159	6.3	0.15	10000	100
LAM-259	6.3	0.25	10000	100
LAM-1112	12	0.10	5000	100
LAM-2521	12	0.18	3000	100
LAM-512	12	0.22	1000	100
LAM-161	14	0.19	4000	100
LAM-2541	24	0.08	5000	100
LAM-656	28	0.06	5000	100





## ASSA® Desmo Casino Locks

### D1118KD

Lock 28.5" 1-1/8"  
keyed-different

### D1078KD

Lock 22.3" 7/8"  
keyed-different

### D2058KD

Lock AD390  
keyed-different



## Xlock Keyed-Different Locks

### X1118KD

Lock 28.6mm 1-1/8"  
keyed-different

### X1078KD

Lock 22.3mm 7/8"  
keyed-different

### X1058KD

Lock 16mm 5/8"  
keyed-different



## VENIA® Security Locks

### V1118KD

Lock 28.6mm 1-1/8"  
keyed-different

### V1078KD

Lock 22.3mm 7/8"  
keyed-different

### V1058KD

Lock 16mm 5/8"  
keyed-different



## E-PRL Electronic Reprogrammable Lock

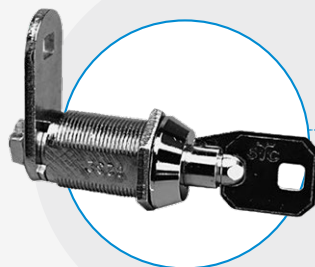
### EPRL05A10-001

Lock E-PRL reprogrammable

### EPRL02A11-001

Lock E-PRL 23mm

Available with Bluetooth



## STC® Round Key Locks

### S1118KD

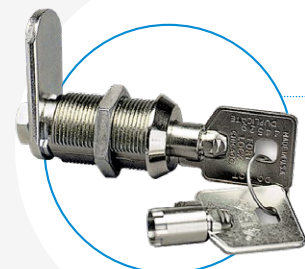
Lock 28.6mm 1-1/8"  
keyed-different

### S1078KD

Lock 22.3mm 7/8"  
keyed-different

### S1058KD

Lock 16mm 5/8"  
keyed-different



## GEMATIC Locks

### F1058

Lock 16mm – 5/8"  
keyed-alike

### F1078

Lock 22.3mm – 7/8"  
keyed-alike

### F1118

Lock 28.6mm – 1-1/8"  
keyed-alike

Also available as Standard Switchlock, 36.4mm – 1-7/16"



## Key-Bak Super 48 Key Reel

PART N.

30-0101-01 *Super 48 Key Reel with Kevlar Cable*

- ▶ Polycarbonate high strength case
- ▶ Dust shield keeps interior clean
- ▶ Kevlar cable is stronger but lighter than chain and is smooth in action
- ▶ Clip/Loop attachment allows dual functionality
- ▶ Clip design similar to pistol holsters; meets penal “anti-snatch” rules
- ▶ Carries up to 5 times the weight of other retractors
- ▶ Oversize split ring is standard for larger load
- ▶ Corrosion proof for long service life

## Key-Bak “Spinner” Key Reel

PART N.

30-0101-05 *“Spinner” Key Reel with 48” Cable*

- ▶ Can be extended at any angle – a full 360-degree spin with virtually no wear on the chain or cable
- ▶ “Spinner” can be removed from its base and used simply as a key holder
- ▶ Clip-On style
- ▶ Available with 24” chain or 48” cable
- ▶ Color: attractive black metal case



## Key-Bak “Spinner” Key Reel

PART N.

30-1951-00 *Clip on Style with Chain*

- ▶ Clips-On style or belt loop style
- ▶ Chrome case
- ▶ 24” stainless steel chain
- ▶ Swivels to prevent chain twisting

## Key-Bak Super 48 Le For Security Professionals

PART N.

30-0101-03 *Key-Bak Super 48 LE with Stainless Steel Cable*

30-0101-08 *Key-Bak Super 48 LE with Kevlar Cable*

- ▶ For uniformed law enforcement professionals such as Sheriffs and Police
- ▶ Leather belt loop on back fits a standard 2.75” wide Sam Browne duty belt
- ▶ Polycarbonate high strength case
- ▶ Dust shield keeps interior clean and prolongs service life
- ▶ Extension member of stainless steel cable with tough nylon jacket or Kevlar cable available
- ▶ Loop design meets penal “anti-snatch” rules
- ▶ Carries up to 5 times the weight of other retractors
- ▶ Oversize split ring is standard for larger load
- ▶ Corrosion proof for long service life



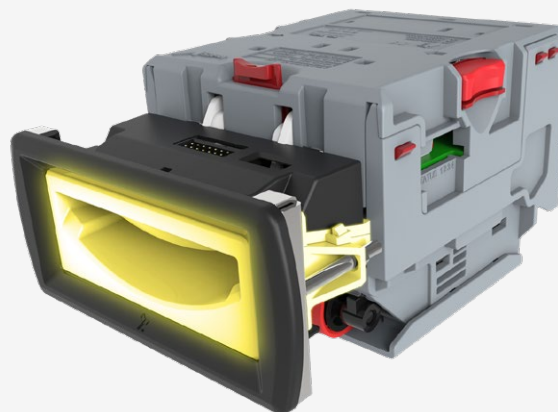


## NV9 Spectral



- ▶ Unrivalled genuine note detection & protection against fraudulent notes
- ▶ Outstanding fraud protection
- ▶ Stained note detection
- ▶ Full note high resolution imaging – 1.28 million data points
- ▶ Faster note to note processing
- ▶ Optical and mechanical anti-strimming technology
- ▶ Easy maintenance, free firmware updates
- ▶ Modular design – recycler or ticket printer available
- ▶ Various cashbox and bezel options

## NV10 USB+



- ▶ One build standard for global applications
- ▶ Lowest cost of ownership
- ▶ Enhanced sensing technology
- ▶ Proven field reliability
- ▶ Compact stackerless design
- ▶ Over 100 different world currencies accepted
- ▶ Simple integration
- ▶ Future proof – quick & easy updates via USB, PC, or handheld programmer

## Dual Change Cashless



- ▶ Notes and coins dispensed automatically or manually
- ▶ Machine cloning function
- ▶ Export accounting data and import configuration parameters via 32-bit CPU with SD-Card
- ▶ Internal on/off controls to prevent tampering
- ▶ Pivoting door to facilitate dispenser-loading and cash box removal operations
- ▶ Installation: wall mounted, countertop and free standing on a cabinet base





# SC-8220

## Multi Currency Counter & Sorter

PART N.  
158-SC8220-000



Free count mode for notes  
and tickets



Single denomination counting  
and sorting



Detect counterfeits



Easy flex between different  
currencies



Emission counting



Value counting



Multi currency mode



No need for banknote verifiers



Easy to update



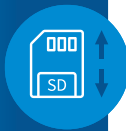
Serial number reading



▶ Easy Roller  
Cleaning



▶ Easy  
Updating



▶ Easy Note  
Verification



# K2

## Currency Sorter

PART N.  
1405-K2

- ▶ Speed up to 1000 notes/min - value counting
- ▶ More than 60 different currencies available
- ▶ Multi language: English, German, French, Italian, Spanish, Portuguese, Greek
- ▶ Currency auto detect
- ▶ Non-stop processing: any suspect or unrecognised notes are off-sorted to a reject pocket without interrupting the processing flow
- ▶ Equipped with the latest sensor technology: MG, UV, IR and image detection
- ▶ User levels password protection
- ▶ Service-friendly modular design, it is easy to replace parts and carry out daily maintenance
- ▶ Quick and easy updates through the USB port
- ▶ Works seamlessly with the unique monitoring software solution, and the Cash Center processing solution



▶ 4.3" Touch Screen  
with Intuitive  
User Interface





## SC-303

### Long-lasting Coin Counter

PART N.

012461-004

- ▶ Speed up to 2,700 coins/min.
- ▶ Universal counting, bagging and tubing
- ▶ Electronic sensing technology to assures high accuracy in identifying foreign, damaged or counterfeit coins
- ▶ Automatic reverse function to remove jammed coins
- ▶ Automatic stop and out sort function for small coins
- ▶ Pre-selectable bag stops
- ▶ Easy to read LED display



- ▶ Handled for Easy Transportation



## ICX Active-9

### Mid-range Active Coin Sorter

PART N.

5004809-GB0 *GBP Currency*

5004809-EU0 *EUR Currency*

- ▶ Superior coin identification
- ▶ Active Sorting® technology
- ▶ Intelligent coin processing
- ▶ Flexible batch-stops
- ▶ Data loss prevention
- ▶ Vast data connectivity
- ▶ Advanced jam-prevention technology
- ▶ Non-stop processing
- ▶ Future-oriented
- ▶ Service friendly
- ▶ Custom variables and input fields



- ▶ 9 Coin Outlets plus 1 for Rejection
- ▶ 10" Touchscreen User Interface
- ▶ 3 USB for Accessories or Peripherals



# SC-350

## Heavy Duty Coin Counter

PART N.  
019350-004

- ▶ Speed up to 3,000 coins/min.
- ▶ Manual hopper
- ▶ A non-volatile memory to storage of data on counted coins
- ▶ Electronic sensing technology to assure high accuracy and low noise
- ▶ Automatic reverse function to remove jammed coins
- ▶ Automatic stop and out sort function for small coins
- ▶ Accessories and 7 pre-programmable quantity stops (plus 1 continuous) to make it highly effective filling machine
- ▶ Serial interface to monitor and control from a PC



### ▶ Easy to Read LED Display



# SC-360

## Heavy Duty Coin Counter

PART N.  
019360-004

- ▶ Speed up to 3,000 coins/min.
- ▶ Larger and automatic hopper with filling
- ▶ A non-volatile memory to storage of data on counted coins
- ▶ Electronic sensing technology to assure high accuracy and low noise
- ▶ Automatic reverse function to remove jammed coins
- ▶ Automatic stop and out sort function for small coins
- ▶ Accessories and 7 pre-programmable quantity stops (plus 1 continuous) to make it highly effective filling machine
- ▶ Serial interface to monitor and control from a PC



### ▶ Automatic Large Hopper





# SBT-1000

## Sport Betting Terminal

### High Performance / High Quality Components

- ▶ Intel 4-Core i3-8100T, 8GB RAM, 128GB SSD (expandable to 64GB/256GB)
- ▶ Dual Elo Touch 21.5" PCAP LCDs
- ▶ Choice of Printer:
  - CUSTOM MODUS 3 thermal roll printer w/ cutter, anti-jam technology
  - TransAct Epic Edge TITO printer
- ▶ Choice of Bill Validators:
  - JCM UBA PRO (500 note cashbox)
  - MEI SC Advance (SCNxx 600 note cashbox)
  - ITL NV200 Spectral (500 note cashbox)
- ▶ Newland FM430 scanner
- ▶ Optional RM5 HD Coin Acceptor
- ▶ Optional Magtek MT-215 Insertion Card Reader

### Features

- RGB LEDs- 7 colors selectable through switches
- Super-durable baked-on powder coatings
- Custom colors/backlighted logo
- Soft power up/down key switch
- Software-accessible low paper sensor
- Printer and peripheral power-saving features
- Universal power supply, localized power cable
- UL, CE, international EMC and safety certifications
- GLI-20 certified cabinet, designed to pass GLI-33 with platform software
- 3-year global warranty on the computer and displays

#### Security with Keyed-Different Access Levels

- Printer paper door sensor
- Note/coin unjamming door sensor
- Cashbox door sensor
- Additional cashbox security strap
- Computer access door sensor
- Soft power on/off keyed-switch
- Service mode keyed-switch

#### Design and Production Quality

- Welded seams
- Quality harnessing
- ISO 9001, UL-Certified production sites

Other peripherals and customization options are all possible







# SBT-500

## Cashless Sport Betting Terminal

### High Performance / High Quality Components

- ▶ Intel's 8th gen processor, 4-Core i3-8100T, 8GB RAM, 128GB SSD (expandable to 64GB/256GB)
- ▶ Elo Touch 15.6" widescreen PCAP LCD
- ▶ CUSTOM MODUS 3 80mm thermal roll printer w/ cutter, anti-jam technology
- ▶ Newland FM3080 scanner for phone or ticket
- ▶ Optional Magtek 3-Stripe MSR



### Features

- Software-controllable full spectrum RGB LEDs
- Software-accessible low paper sensor
- Keyed-different printer and computer door locks with sensors
- Service mode key switch
- Soft power up/down key switch
- Customizable colors/logos, super-durable baked-on powder coatings
- Secure table mounting — cables exit through rear or base
- Printer and peripheral power-saving features
- Universal power supply, localized power cable
- International EMC and safety certifications
- Designed to pass GLI-33 with platform software
- 3 year global warranty on the computer and display

#### Security with Keyed-Different Access Levels

- Printer paper door sensor
- Computer access door sensor
- Soft power on/off keyed-switch
- Service mode keyed-switch

#### Design and Production Quality

- Welded seams
- Quality harnessing
- Fingerprint-resistant chrome and paint
- Durable steel alloy internal locking mechanisms
- ISO 9001, UL-Certified production sites



Optional  
card reader



Sealed  
Spill-Proof Design  
9° Slant – No Drink  
Placement



Engineered  
for Various  
Viewing Angles



# SBT-OTC

## Over-the-Counter Sports Betting Terminal

### High Performance / High Quality Components

For your more traditional customer, or in an area where you need controlled betting, allow your cashier to manage all the bets. The SUZOHAPP OTC offering is modern and modular, utilizing the same core component engines as SUZOHAPP's kiosk SBTs to ease the software development, performance, and certification across form factors.

### Standard Configuration and Accessories

Consists of an Intel i3 processor, 15" display, and optional 10" customer facing display via a single cable USB-C connection. The I/O hub includes 7 USB ports (including powered USB), 2 serial ports, and a cash drawer port. Additionally up to 4 integrated peripherals can be added to the display edges (i.e. MSR, EMV cradle, webcam, fingerprint scanner, status light).

### Flexibility / Options

Options include choice of processor (Celeron, i3, i5) with RAM and storage expansion, main display size (15", 15" wide, 17", 21.5"), secondary display (10.1" or 13.3" with or without touch), in countertop or wall mount configuration. Other printers and scanners when required.

- ▶ Intel 4-Core i3, 8GB RAM (up to 64GB), 128GB SSD
- ▶ 15" PCAP touchmonitor
- ▶ CUSTOM P3 thermal roll printer w/ cutter
- ▶ Newland HR3280 scanner
- ▶ 3-year global warranty on the computer, 5 years on the scanner
- ▶ Global certifications



### Different Form Factors Available with Ease of Integration

- Same computer platform for front and back of house units allows for a seamless experience
- Same manufacturer of displays, scanners, and printers



Shown with optional 13.3" customer display and MSR



# Elo Touch Solutions

## Distributed globally by SUZOHAPP

World-Class Quality, Global Approvals and Support

Elo is the world leader in commercial touch with over 20 million installations, half a million units per year, nearly 2,000 units per day. And SUZOHAPP is the world's largest distributor of this premium open frame product line.

Engineered and designed specifically for the demanding requirements of the gaming industry, the 90-Series open-frame displays feature integrated touch technology rather than glued-on additions. Select from a wide range of sizes from 10" to 27" to fit in any gaming environment. Elo products extend the range to 70".

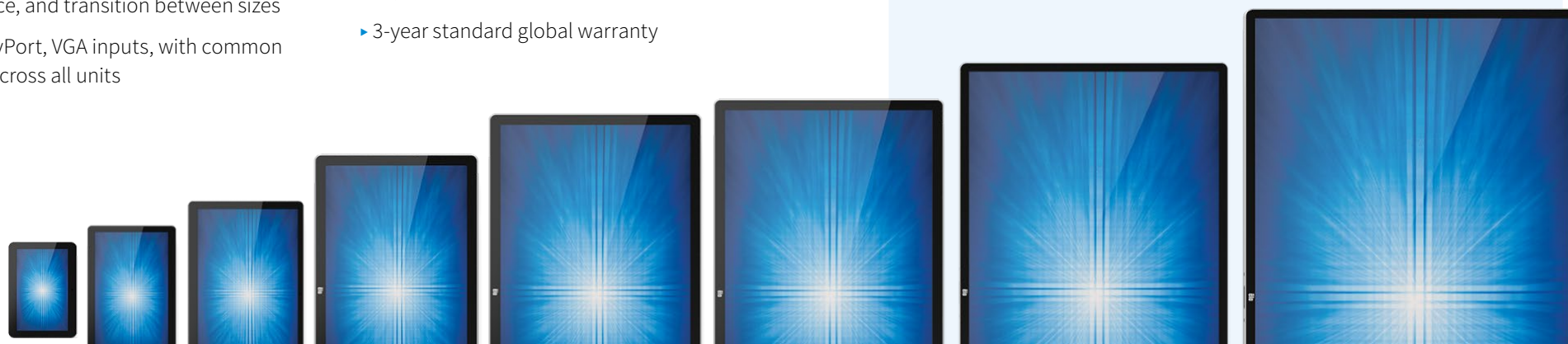
- ▶ Next generation Projected Capacitive (PCAP) 2GS technology (2 glass solution)
- ▶ Highest optical quality and longevity as no plastic films, no metal mesh
- ▶ 10-touch true-flat solution
- ▶ Thru-glass mode which operates through up to 6 mm customer-supplied glass
- ▶ Common mechanical and electrical components across the line for easy design-in, compliance testing, service, and transition between sizes
- ▶ HDMI, DisplayPort, VGA inputs, with common port design across all units
- ▶ Built-in watertight edge seal
- ▶ Magnetic tethered OSD control box
- ▶ Unique field-replaceable touchscreen glass design
- ▶ Global agency approvals: United States UL, FCC; Europe CE TÜV; Australia RCM; Canada cUL, IC; China CCC; Japan VCCI; Korea KCC; Mexico CoC; Taiwan BSMI; International CB; RoHS
- ▶ Passes UL and IK07 Ball Drop tests
- ▶ 50,000 hour demonstrated MTBF
- ▶ 3-year standard global warranty

# elo



10" to 27" Desktop Touchmonitors, All-in-Ones and Interactive Digital Signage from 10" to 70"

SUZOHAPP also distributes the complete line of Elo Touch Solution products — seen in cashier cages, sports betting outlets, and on the gaming floors in top casinos around the world. Monitors and All-in-Ones for front/back office, interactive digital signage, bingo, lottery, sports betting, player tracking, loyalty systems and pos.





**SUZOHAPP UK Ltd**

Unit D2 Longmead Business Park, Felstead Rd,  
Epsom, Surrey - KT19 9QG, United Kingdom

Phone: (+44) 208 391 7700  
sales.ch.uk@suzohapp.com

© 2022 SUZOHAPP All rights reserved. Specifications subject to change.

Trademarks owned by their respective holders.

No part of this catalogue may be reproduced in any form by print, photoprint or any other means, without written permission from the publisher. Technical data, text and pictures are subject to error and modifications. The catalogue can be subject to further developments.

[suzohapp.com](https://suzohapp.com)