

LCD Button Deck

15" 1/3 LCD Button Deck

- ✓ 10-point PCAP
- ✓ 170/160 viewing angle
- ✓ 2T glass
- ✓ Black masking
- ✓ R5 corners
- ✓ USB



16.4" LCD Button Deck

- ✓ 170/160 viewing angle
- ✓ 10-point PCAP
- ✓ 2T glass
- ✓ Black masking
- ✓ USB



16.4" LCD Button Deck with Customized

- ✓ 170/160 viewing angle
- ✓ 10-point PCAP
- ✓ 2T glass
- ✓ Black masking
- ✓ USB
- ✓ 1 push button hole

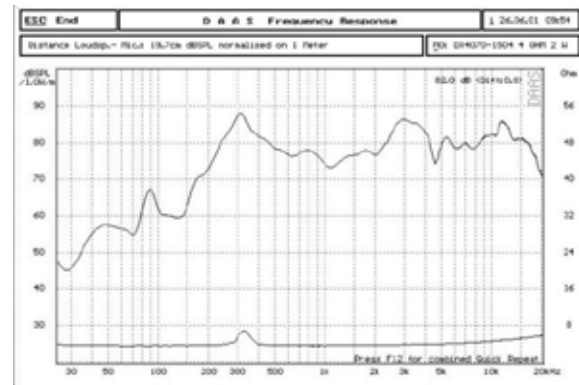
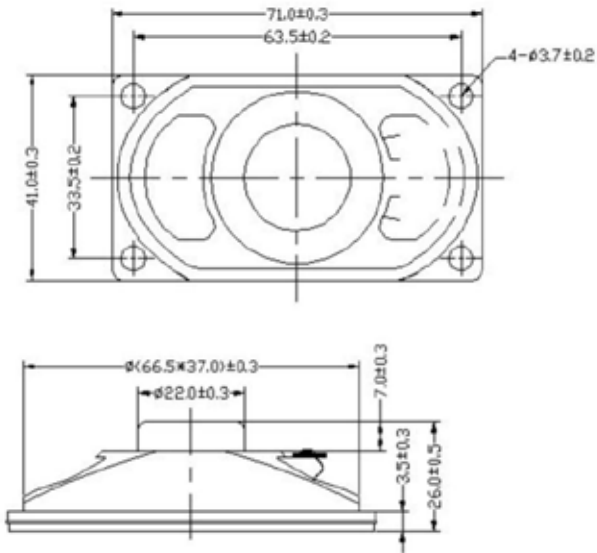


Oval Speaker 41 x 71 mm 8Ω2w



Part number: 22-0961

Technical Schematics



Note: Unit of measure: mm

Technical Specifications

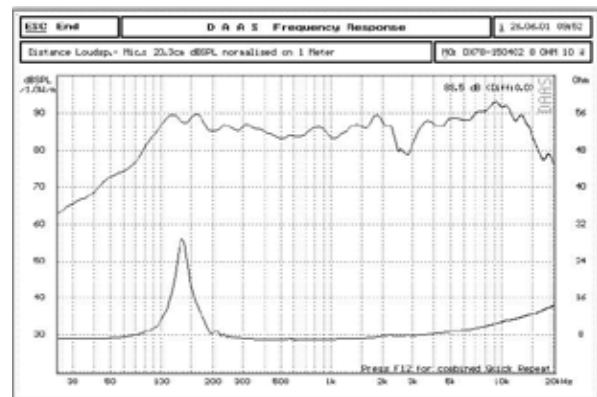
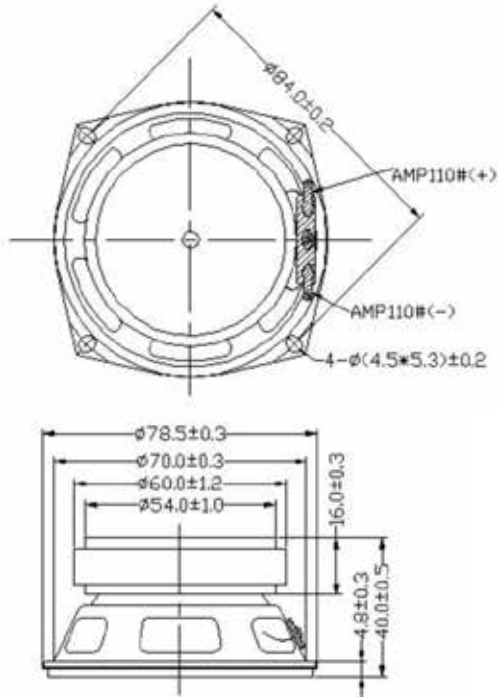
Voice Coil Imp.	4 Ω ± 15%	AT 400 HZ 1.0V	
Voice Coil Imp.	3.6 Ω ± 15%	AT 400 HZ 1.0V	
Buzzes & Rattles	Must Be Normal	Sine Wave 2.8 V/150~1500 HZ	
Resonant Freq	330HZ ± 20%		
Output S-P-L	Mean value at 82.0±2 DB 0.6 , 0.8 , 1.0 , 1.2 KHZ	At 1W Axis Calculated From 1M Measurement	
Freq. response	220 – 2000HZ OUTPUT SPL -10DB		
Rated Power Input	2W	Sine Wave Program Signal	
Max. Power Input	4 W		
Temperature Range	-25 ~ 70°C		
Distortion	5% Less-Max	Rated Power Input	
Load Test	After Test Meet Item 2 & 3	Pink Noise 2 W 24 Hours	
Heat Test	After Test Meet Item 2 & 3	70±2°C 20~25% R.H. 24 HOURS 40±2°C 90~95% R.H. 24 HOURS	
Bobbin Material	Paper	Diaphragm Material	Paper
Wire Material	Lock	Edge Material	Form
Voice Coil I.d. (Min)	φ 13 Mm	Top Plate Thickness	2 mm
Magnet		Frame	
Weight	Main: GR	Material	FE
Size	Main: φ 12,5*φ 3 Tmm	Finish	Black Painting
Material	Nd-Fe-B	Dust cap Material	Paper
Connections	4.8 X 0.5 MM (+)	2.8 X 0.5Mm (-)	
Quality Inspection Level	II AQL (0.65)MA (2.5)MI		

Full Range Speaker 3.3" 8Ω10w

Technical Schematics



Part number: 22-0962



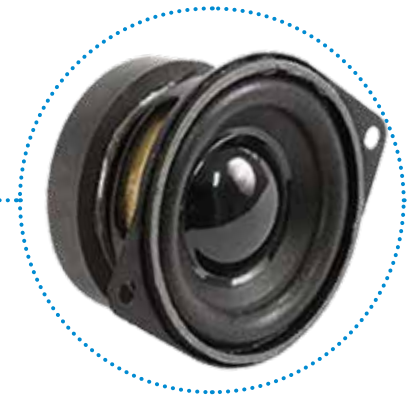
Note: Unit of measure: mm

Technical Specifications

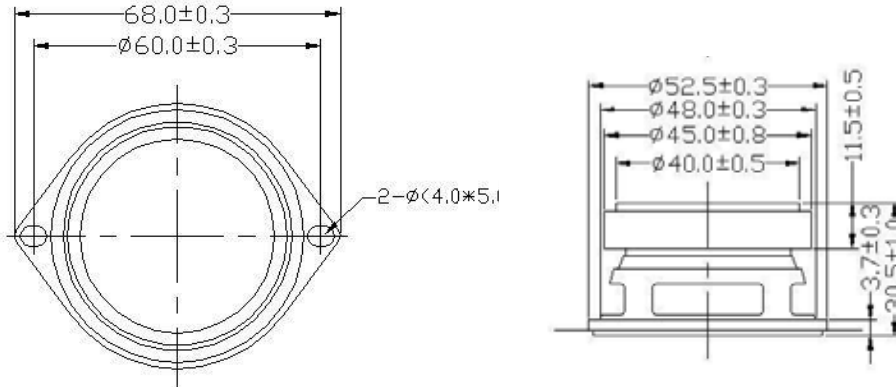
Voice Coil Imp.	8 Ω OHM ± 15%	AT 400 HZ 1.0V	
Voice Coil Imp.	7.2 Ω ± 15%	AT 400 HZ 1.0V	
Buzzes & Rattles	Must Be Normal	Sine Wave 8.0 V/60~1500 HZ	
Resonant Freq	140 ± 20% Hz		
Output S-P-L	Mean value at 88.0±2 DB 0.6 , 0.8 , 1.0 , 1.2 KHZ	At 1W Axis Calculated From 1M Measurement	
Freq. response	220 – 2000HZ OUTPUT SPL -10DB		
Rated Power Input	10 W	Sine Wave Program Signal	
Max. Power Input	15 W		
Temperature Range	-25 ~ 70°C		
Distortion	5% Less-Max	Rated Power Input	
Load Test	After Test Meet Item 2 & 3	Pink Noise 10 W 24 Hours	
Heat Test	After Test Meet Item 2 & 3	70±2°C 20~25% R.H. 24 HOURS 40±2°C 90~95% R.H. 24 HOURS	
Bobbin Material	AVS	Diaphragm Material	Paper
Wire Material	Lock	Edge Material	Form
Voice Coil I.d. (Min)	φ 14 Mm	Top Plate Thickness	3 mm
Magnet		Frame	
Weight	Main: GR	Material	FE
Size	Main: φ 60*φ 32* 10Tmm	Finish	Black Painting
Material	Ferrite	Dust cap Material	Paper
Connections	4.8 X 0.5 MM (+)	2.8 X 0.5Mm (-)	
Quality Inspection Level	II AQL (0.65)MA (2.5)MI		

Full Range Speaker 2" 8Ω5w

Technical Schematics



Part number: 22-0963



Note: Unit of measure: mm

Technical Specifications

Voice Coil Imp.	8 OHM ± 15%	AT 400 HZ	1.0V
Voice Coil Imp.	7.2 OHM ± 15%	AT 400 HZ	1.0V
Buzzes & Rattles	Must Be Normal	Sine Wave	4.9 V/80~1500 HZ
Resonant Freq	190 ± 20% Hz		
Output S-P-L	Mean value at 83.0±2 DB 0.6 , 0.8 , 1.0 , 1.2 KHZ	At 1W Axis	Calculated From 1M Measurement
Freq. response	150 – 2000HZ OUTPUT SPL -10DB		
Rated Power Input	5 W	Sine Wave	Program Signal
Max. Power Input	8 W		
Temperature Range	-25 ~ 70°C		
Distortion	5% Less-Max	Rated Power Input	
Load Test	After Test Meet Item 2 & 3	Pink Noise	10 W 24 Hours
Heat Test	After Test Meet Item 2 & 3	70±2°C	20~25% R.H. 24 HOURS 40±2°C 90~95% R.H. 24 HOURS
Bobbin Material	Papper	Diaphragm Material	Paper
Wire Material	Lock	Edge Material	Form
Voice Coil I.d. (Min)	φ 13 Mm	Top Plate Thickness	1.5 mm
Magnet		Frame	
Weight	Main: GR	Material	FE
Size	Main: φ 45 * φ 19 * 8 Tmm	Finish	Black Painting
Material	Ferrite	Dust cap Material	Black Mylar
Connections	4.8 X 0.5 MM (+)	2.8 X 0.5Mm (-)	
Quality Inspection Level	II AQL (0.65)MA (2.5)MI		