

## Stationary Scanners

Newland scanners are supported by EasySet – a software tool for configuration, cloning setup for fast deployments, firmware upgrades, imaging functions, and includes a barcode generator.



### FM3080

#### Impressive short-range scanning capabilities combined with customization

Prepared for integration in your kiosk or counter, the FM3080 Hind combines performance and customization. The large scan window is optimized for short range reading of barcodes from a mobile phone or paper, even placed directly on the glass. With 4 color options available, the FM3080 Hind can be easily programmed to indicate a successful read or to match your brand.



### FM100

#### Reading performance reaches and exceeds global standards, advanced CCD scan engine

Designed for OEM applications, this high-performance fixed scan engine can easily be integrated into various solutions such as kiosks, ticketing machines, (reverse) vending machines and many more. CCD technology means no laser, mirror or moving parts for increased durability.



### FM430 Barracuda

#### Read barcodes from short or long range with this compact scanner for when less space is available

The new FM430 Barracuda is Newland's most aggressive and efficient fixed mount scanner to date, making it a strong all-around solution. It's equipped with a megapixel camera that scans virtually any 1D and 2D barcode with impressive speed and ease. On top of that, its programming, IR sensor and light sensor help keep users moving, even in low light conditions. The combination of these features makes the device a leader in its class.



### FM3051 Grouper II

#### Plug-and-play simplicity enhancing your experience right from the start

With its snappy barcode reading of virtually any 1D or 2D barcode, the FM3051 Grouper II is the perfect response to the trend of barcodes moving from paper to the screen. Built to read from contemporary LCD widescreen devices, the fixed scanner is ideal for mobile phone applications like loyalty programs and ticket validation. Whether it's an employee scanning a product label or a customer scanning a voucher on their mobile phone, barcode scanning is always easy and quick. The form factor and small footprint of the FM3051 Grouper II makes it easy to integrate into a kiosk. Also available in flush mount: the FM3056 Grouper II.



### FM3056 Grouper II

#### Plug-and-play simplicity enhancing your experience right from the start

The FM3056 Grouper II is a flush mount scanner with a minimal footprint. With a height of only 53mm, the device is small enough to fit into most kiosks, while the flush mount ensures that the device suits any business environment. Built to read from contemporary LCD widescreen devices, the fixed scanner is ideal for mobile phone applications like loyalty programs and ticket validation. Whether it's an employee scanning a product label or a customer scanning a voucher on their mobile phone, barcode scanning is always quick and easy. The FM3056 Grouper II is the flush mount equivalent of the FM3051 Grouper II.



### FR27

#### Latest technology, compact design, CPU-based scanner

Armed with Newland's latest-generation UIMG® technology, the FR27 can decode poor quality soiled or wrinkled barcodes with ease, even on a screen covered with protective film. Its exceptional motion tolerance and large FOV enhance the user experience. Fits on a narrow desk or shelf when space is at a premium.





### FR21 Neon

Ideal desktop scanner for mobile payment, customer loyalty and ticket verification

The FR21 Neon was built to create an optimal customer experience at the POS. It scans quickly and easily, even for the most inexperienced user, making it an ideal solution for applications like mobile payment, customer loyalty, cashback, and ticket verification. "Scan here" circle customizable with any sticker.



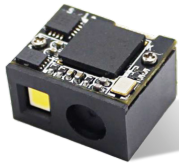
## OEM Scan Engines



### EM2037-V4

Delivers speedy and accurate scanning performance

No matter what type of barcode is presented, the megapixel camera allows users to scan 1D and 2D barcodes, including very small ones, with impressive speed and ease. In addition to excellent scanning of high-density barcodes, the EM2037-V4 also provides the added value of decoding postal barcodes.



### EM3080-W

Small, lightweight and easy for integration

The EM3080-W is Newland's smallest OEM scan engine. Including easy integration with a minimal footprint, the EM3080-W is the perfect solution for all-around scanning capabilities.



### EM2080

Snappy on-screen barcode capture

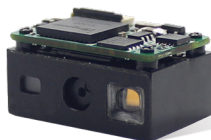
The CPU-powered EM20-80 is incredibly reader-friendly on smartphone and tablet displays, and features excellent near-field reading, a wide viewing angle and snappy reading.



### EM3396

Integratable into various OEM devices including kiosks, ticket validators, and PDA's

The EM3396 OEM scan engine with a bright laser aimer, offers stunning performance on 1D and 2D barcodes. It can be integrated into various OEM devices including kiosks, ticket validators and PDA's. Due to its light weight of only 4g, solid-state build and low power consumption, the engine is ideal for portable scanning devices.



### EM50S-10

Superior scanning performance

The EMS0S-10 / EMS0S-20 is a CPU-based scan engine that delivers stunning performance. Armed with Newland's sixth-generation of UIMG technology, decoding damaged or poor-quality barcodes is no match for this scan engine.



### EM1300

Compact and highly integrated design

Designed for OEM applications, this high-performance CCD scan engine can easily be integrated into various solutions such as kiosks, ticketing machines, PDA's and many more.

