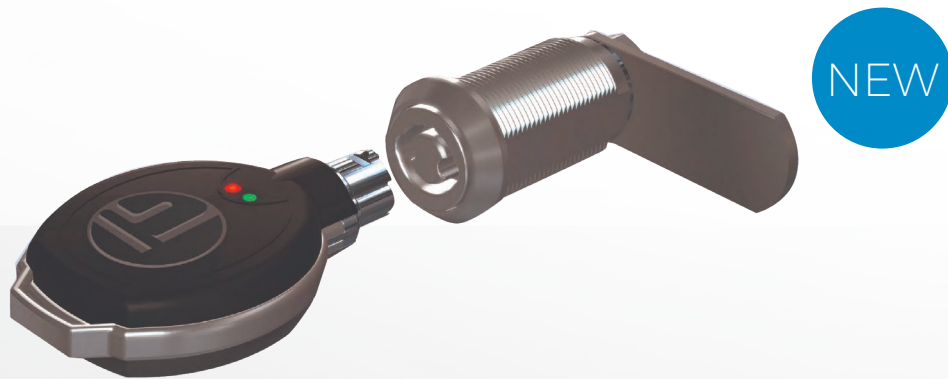


# E-PRL

## Electronic online Re-Programmable Lock



Innovative, patented lock using electronics to raise the level of security from mechanical technology. E-PRL is a locking system composed of universal locks with stainless-steel housing and self-powered key sets. It is available in Unique-code or Multi-code versions, and includes remote access control management with dedicated GSN-KEY software. No wiring is required for installation and operation.



### Innovation

It is equipped with self-powered advanced electronic technology. No additional wiring is required



### Access control

It identifies each user, checks the permissions and records each operation. The event log can be downloaded using a special key



### Backward compatibility

The fixing hole, the length and the rotation of the lock make it compatible with the most popular machines on the market



### Security

High mechanical strength, stainless steel housing and electronics with more than 10 billion combinations available, practically endless!



### Bluetooth Connectivity

Fully control your locks from any remote location, even from a smartphone or a tablet

## Features

- ✓ Use of steel in all mechanical parts (AISI 304) to stop forced entry and limit wear
- ✓ Resistant to water and dust for outdoor applications, IP65 sealing
- ✓ No reference on lock for burglary – listing key pair difficult to use in burglary attempts
- ✓ Upgrade to E-PRL without modifying existing mechanicals – lengths and diameters of realization stators compatible with existing mechanical version
- ✓ No addition or change to wiring on machines with mechanical locks as power is internal to the key
- ✓ Modern ergonomic key for comfortable use – dimensions reduced to bare minimum with a harmonic shape
- ✓ High quality Japanese key electronic components
- ✓ Inviolable AES 128-bit custom communication system
- ✓ Over 10 billion possible key codes due to the electronic system
- ✓ Uniqueness of a single key – each key has its own “DNA” derived from on-board electronic data
- ✓ Uses a small, easily changeable, long-life Duracell 2430 battery
- ✓ Lock stores up to 4,000 accesses between downloads
- ✓ High storage capacity of History Key enables storing multiple access locks with a single instrument. The History Key allows downloading and storing up to 32,000 accesses managed through dedicated software

# Sit Back, Relax, Save Time & Money

## New Bluetooth version

Now E-PRL is also available in the Bluetooth version, which enables operators to have the online control of all the locks from a remote location, even from a smartphone or a tablet. Just a click to have the full control. **Anytime, Anywhere.**

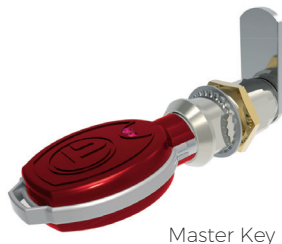
- Create and check permissions
- Create black/white lists
- Reprogram your keys
- Monitor and control each operation
- Keep track of all transactions

## How to use E-PRL

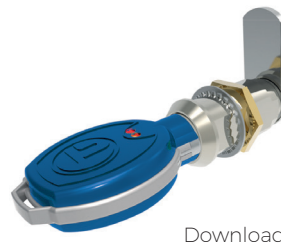
Just insert the Black user key. If the key was previously paired with the lock, the green LED will light up and a manual key rotation will be allowed. To program it you have to use the Red master key, which will allow you to add one or more User keys. The Master key also enables on the same lock one or more features such as Unique code or Multi-Code, and possibly Access Control. In case of Access Control enabled, the Light blue download key lets you download the access history. Then it could be displayed on PC screen using the software GSN-KEY. The following features can be enabled on all locks depending on the type of Master key used during the first programming.



User Key



Master Key



Download Key

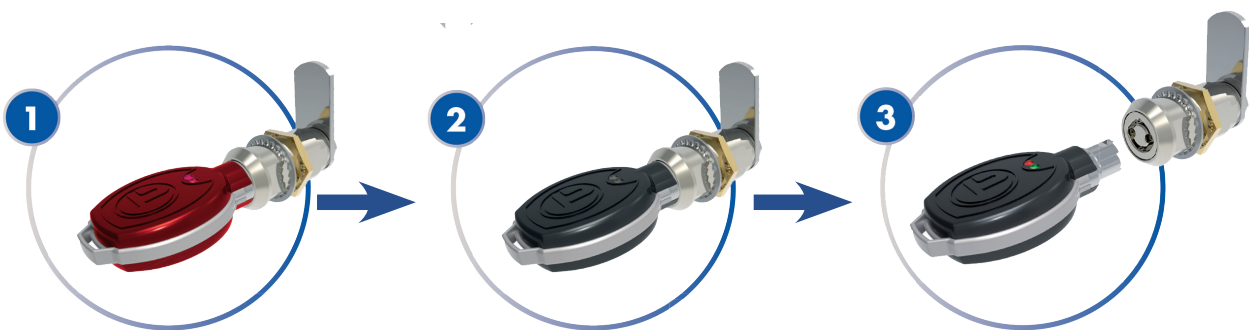


## Unique Code

The Unique Code feature allows the programming of the lock with only one code by pairing only one key. All other keys having the same code will be automatically enabled to open the lock.

### Programming example

The programming of an Unique Code system without access control is very easy and it can be performed in 3 simple steps.



#### STEP 1

Initial programming procedure.  
Insert the Master key and wait for  
the fast flash of the green LED

#### STEP 2

Insert the User key and wait for the long  
flash of the green LED

#### STEP 3

The lock is now ready to be used by any  
other User key having the same code of  
the paired key



## Multi-Code

The Multi-Code feature, allows you to pair each individual lock with different keys with different codes (up to 300). This allows the management of Several hierarchical permission levels, letting some keys open multiple locks where also other keys have been paired. The simplest case is the "Master key system", where each key opens one lock in addition to another key that opens it all.

# Access control

## Access control using the download key

Access control allows you to display each of the opening operations on the locks. The acquisition of the information is done through the BLUE Download key. Once the pairing procedure has been completed, the key allows the downloading in its memory of the events stored in the lock. Connecting the Download key to the Pod provided with the Access control kit, it's possible to download the events onto a PC using the GSN-KEY soft ware. The information tab can then be displayed, filtered, and printed as easy to read reports.



### STEP 1

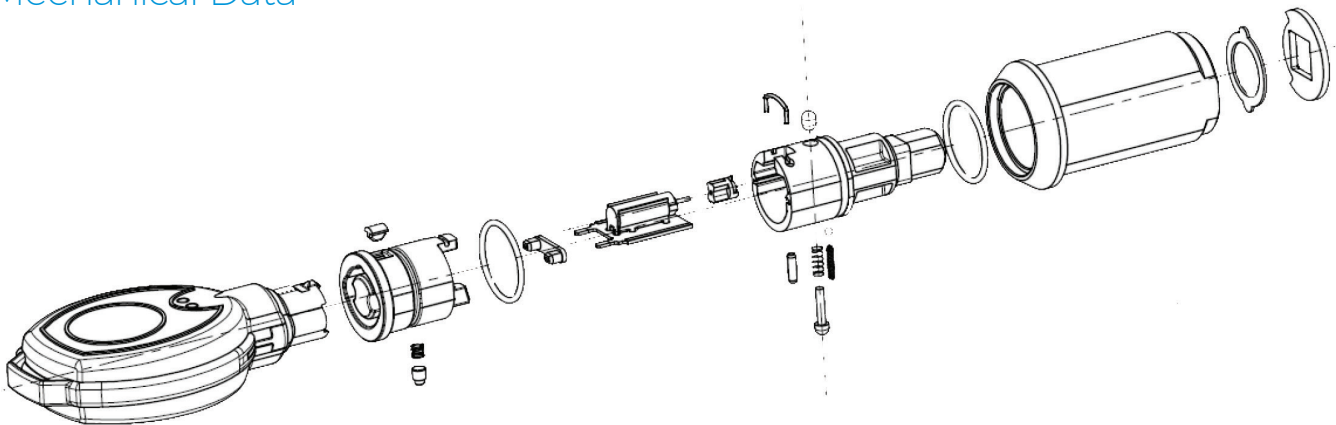
Insert the Download key into the lock, in order to download the event history



### STEP 2

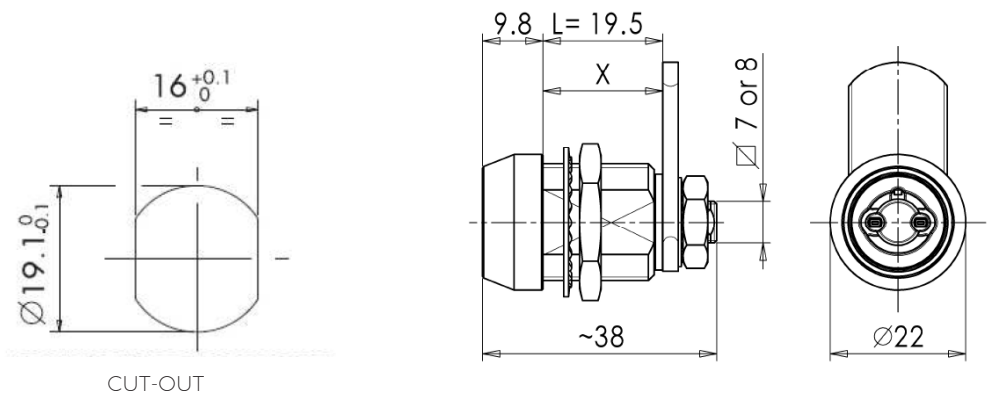
Insert the Download key into the Pod, in order to display the event history with the software GSN-KEY

# Mechanical Data

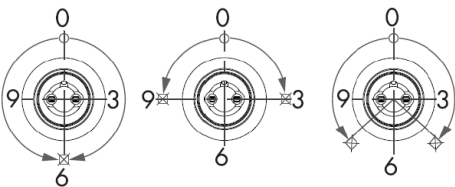


# Electronic Reprogrammable Lock 19,5 mm

Rectangular Reprogrammable electronic lock in stainless steel. The following features depend on the master key used for the initial programming: Unique or Multi-Code, Access Control enabled or disabled. In multicode mode, the lock can be paired with up to a maximum of 300 total keys, user and download keys, with different codes. In the case of access control enabled, the lock stores a history of the last 3,300 login events, downloadable via a download key. Wiring is not required for installation and operation as the energy required for the operation is provided by the individual keys. The lock is supplied with a brass nut, toothed washer and 90°, 132° and 180° rotation limiters, both right and left. Cam to be purchased separately. Cylinder length 19.5 mm (complete thread) with standard 1 key exit.



## POSSIBLE MOVEMENTS WITH PROVIDED WASHER KIT



90° right hand or left hand

132° right hand or left hand

180° right hand or left hand

## INFORMATION TO ORDER

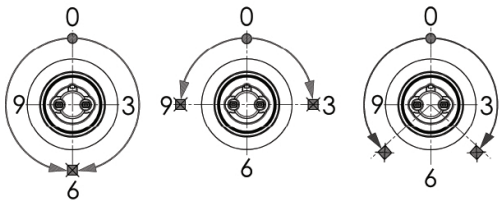
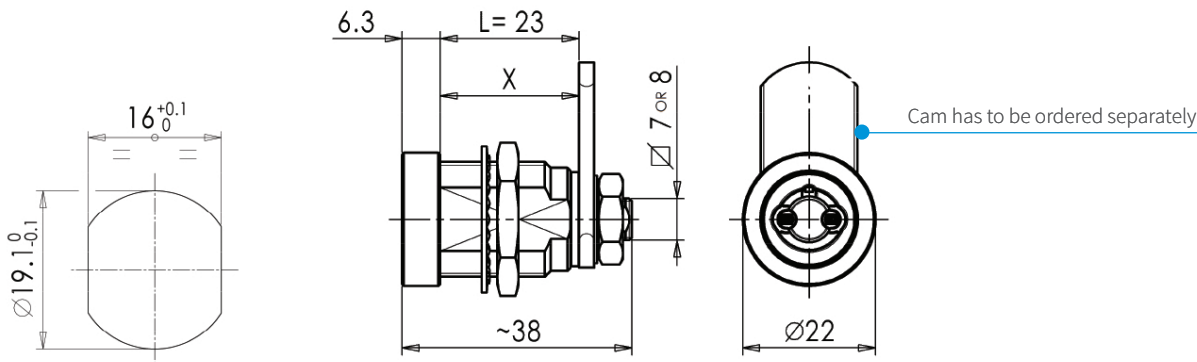
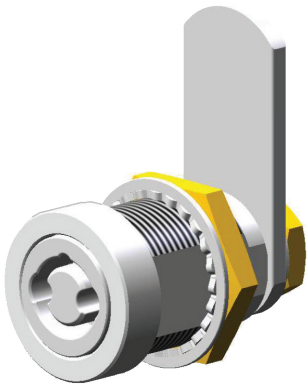
TYPE	
EPRL	RIPROGRAMMABILE E-PRL - ELECTRONIC REPROGRAMMABLE LOCK E-PRL
LOCK LENGTH	
06	19,5 mm (COMPLETE THREAD)
HOUSING MATERIAL	
A	STAINLESS STEEL AISI 303
B	STAINLESS STEEL AISI 316
KEY EXIT	
1	1 EXIT
2	2 EXITS
CAM SPINDLE SQUARE DIMENSION	
1	7 mm
2	8 mm

EPRL	06				-	000
------	----	--	--	--	---	-----

LEGEND      RECOMMENDED      ON DEMAND      NOT AVAILABLE

# Electronic Reprogrammable Lock 23 mm

Reprogrammable electronic lock in stainless steel. The following features depend on the master key used for the initial programming: unique or Multi-Code, Access Control enabled or disabled. In multi-code mode, the lock can be paired with up to a maximum of 300 total keys, user and download keys, with different codes. In the case of access control enabled, the lock stores a history of the last 3,300 login events, downloadable via a download key. Wiring is not required for installation and operation as the energy required for the operation is provided by the individual keys. The lock is supplied with a brass nut, toothed washer and 90°, 132° and 180° rotation limiters, both right and left. Cam to be purchased separately. Cylinder length 23 mm with standard 1 key exit.



## POSSIBLE MOVEMENTS WITH PROVIDED WASHER KIT

90° right hand or left hand
132° right hand or left hand
180° right hand or left hand

INFORMATION TO ORDER									
TYPE									
EPRL	RIPROGRAMMABILE E-PRL - ELECTRONIC REPROGRAMMABLE LOCK E-PRL								
LOCK LENGHT									
02	23 mm								
HOUSING MATERIAL									
A	STAINLESS STEEL AISI 303								
B	STAINLESS STEEL AISI 316								
KEY EXIT									
1	1 EXIT								
2	2 EXITS								
CAM SPINDLE SQUARE DIMENSION									
1	7 mm								
2	8 mm								
EPRL	02							000	
LEGEND									

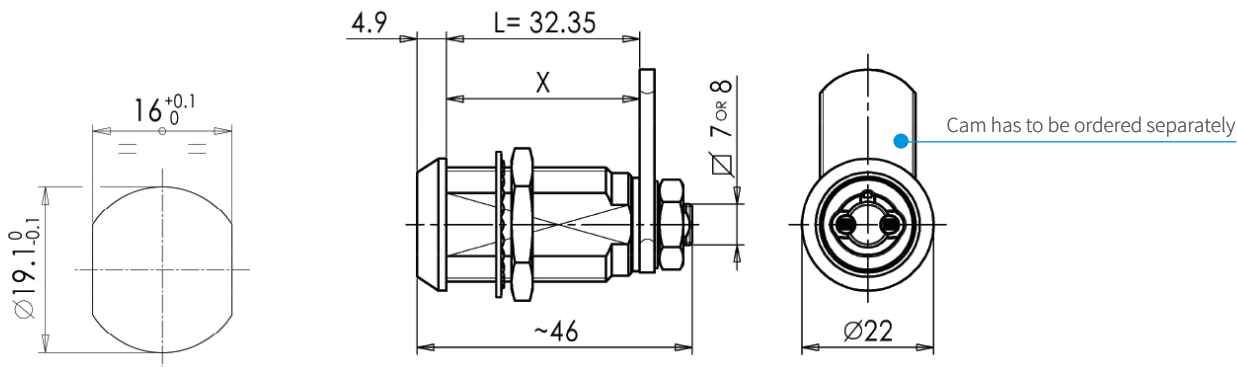
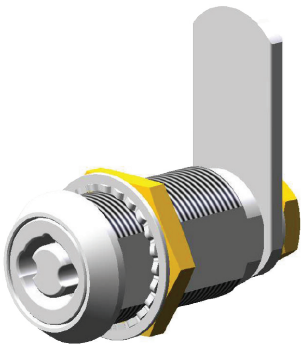
RECOMMENDED

ON DEMAND

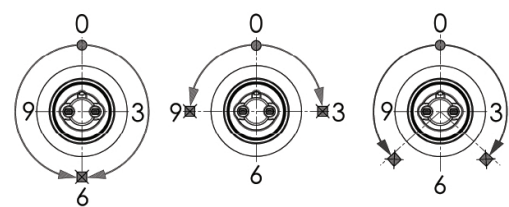
NOT AVAILABLE

# Electronic Reprogrammable Lock - 32 mm

Reprogrammable electronic lock in stainless steel. The following features depend on the master key used for the initial programming: unique or Multi-Code, Access Control enabled or disabled. In multi-code mode, the lock can be paired with up to a maximum of 300 total keys, user and download keys, with different codes. In the case of access control enabled, the lock stores a history of the last 3,300 login events, downloadable via a download key. Wiring is not required for installation and operation as the energy required for the operation is provided by the individual keys. The lock is supplied with a brass nut, toothed washer and 90°, 132° and 180° rotation limiters, both right and left. Cam to be purchased separately. Cylinder length 32 mm with standard 1 key exit..



## POSSIBLE MOVEMENTS WITH PROVIDED WASHER KIT



90° right hand or left hand
132° right hand or left hand
180° right hand or left hand

### INFORMATION TO ORDER

TYPE	RIPROGRAMMABILE E-PRL - ELECTRONIC REPROGRAMMABLE LOCK E-PRL			
EPRL	03	32.35 mm	HOUSING MATERIAL	
			A	STAINLESS STEEL AISI 303
			B	STAINLESS STEEL AISI 316
			KEY EXIT	
			1	1 EXIT
			2	2 EXITS
			CAM SPINDLE SQUARE DIMENSION	
			1	7 mm
			2	8 mm

EPRL	03				-	000
------	----	--	--	--	---	-----

LEGEND

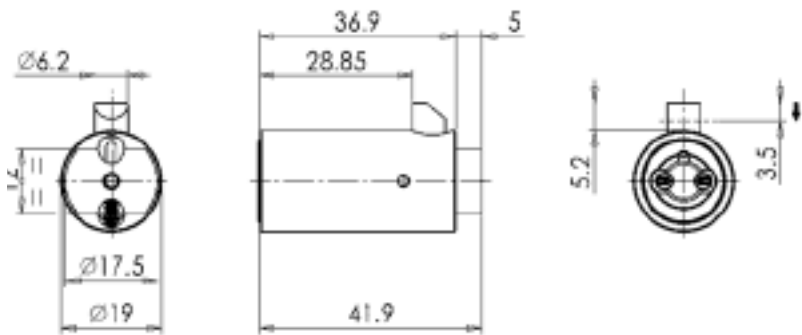
RECOMMENDED

ON DEMAND

NOT AVAILABLE

# Electronic Reprogrammable Lock for Handle

Reprogrammable electronic lock in stainless steel. The following features depend on the master key used for the initial programming: Unique or Multi-Code, Access Control enabled or disabled. In multi-code mode, the lock can be paired with up to a maximum of 300 total keys, user and download keys, with different codes. In the case of access control enabled, the lock stores a history of the last 3,300 login events, downloadable via a download key. Wiring is not required for installation and operation as the energy required for the operation is provided by the individual keys. The lock is supplied assembled and the key rotation is 170° right hand. Cylinder length 42 mm with standard 1 key exit.



## POSSIBLE MOVEMENTS

170° right hand



## INFORMATION TO ORDER

TYPE	
EPRL	RIPROGRAMMABILE E-PRL - ELECTRONIC REPROGRAMMABLE LOCK E-PRL
LOCK TYPE	
04	TUBULAR mm 42
HOUSING MATERIAL	
A	STAINLESS STEEL AISI 303
B	STAINLESS STEEL AISI 316
KEY EXIT	
1	1 EXIT

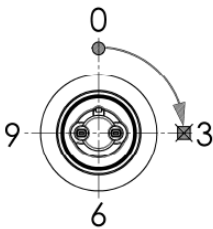
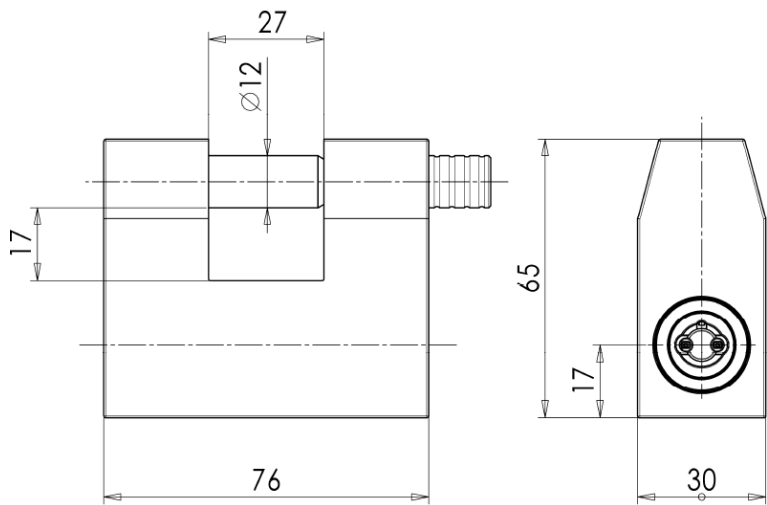
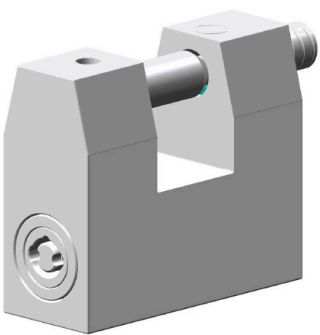
EPRL	04		1	0	-	001
------	----	--	---	---	---	-----

LEGEND        RECOMMENDED        ON DEMAND        NOT AVAILABLE



# Padlock with Electronic Reprogrammable Lock

Rectangular steel padlock consisting of a hardened steel monoblock with external anticorrosive treatment, stainless steel slider lock bolt and stainless steel reprogrammable electronic lock. The following functions depend on the master key used for the first programming: Single Code or Multi-code, access control enabled or disabled, can also be used with Bluetooth key system. In case of Multi-code mode, the lock can be combined up to a maximum of 300 total keys between user and download, having different codes.



## POSSIBLE MOVEMENTS

90° right hand

### INFORMATION TO ORDER

TYPE	
EPRL	RIPROGRAMMABILE E-PRL - ELECTRONIC REPROGRAMMABLE LOCK E-PRL
LOCK TYPE	
05	PADLOCK WITH ELECTRONIC LOCK
PADLOCK MATERIAL	
A	CARBON-NITRITED STEEL
KEY EXIT	
1	1 EXIT
2	2 EXITS

EPRL	05	A		0	-	001
------	----	---	--	---	---	-----

LEGEND

RECOMMENDED

ON DEMAND

NOT AVAILABLE