

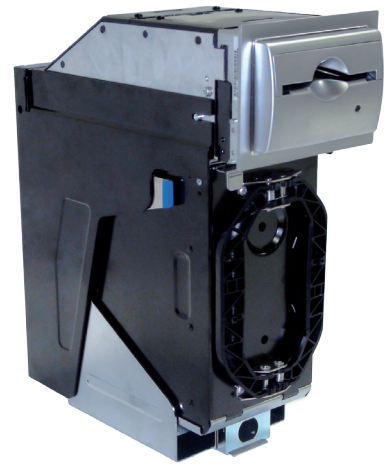
# MFL<sup>®</sup> Validator

## Front Load Banknote Validator

MFL<sup>®</sup> is the first ever front load banknote validator designed for automated cash transaction applications. MFL<sup>®</sup> provides modularity and high security due to unique multi-sensor technology. MFL<sup>®</sup> utilizes a patented alignment mechanism enabling a high acceptance rate for banknotes and barcode vouchers. Due to its robust design and higher reliability, MFL<sup>®</sup> lowers total cost of ownership, enhances protection against counterfeits and improves machine uptime. MFL<sup>®</sup> is widely used in gaming, transportation and retail applications across the globe.

### Features

- Patented multi-sensor\* technology with self-calibration
- Aligning mechanism straightens the misaligned banknotes
- Robust mechanism and beltless bill path
- Removable sensor module\*\*
- Lockable and secured cash box
- Updates by smart-stick memory card or host machine
- It supports multiple protocols and has a standard footprint



### Benefits

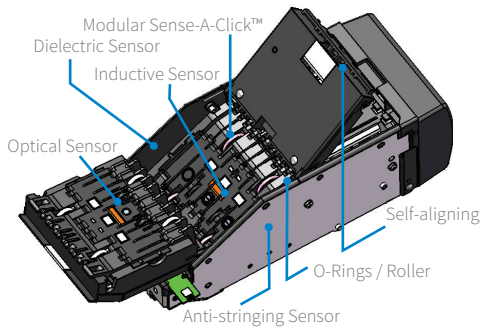
- 98% or higher acceptance rate
- No more jam: it accepts more banknotes
- Reduced service calls for lower cost of ownership
- Easy to maintain, it supports multiple currencies
- Compliant to industry's regulation
- Easy firmware updates
- Easy to retrofit



\*Multi-Sensor: optical, inductive, dielectric, anti-stringing, barcode

\*\* Sense-A-Click™ is all in one built-in removable sensor module

## Validating head



- Accepts up to 82mm wide banknotes in all four directions
- Accepts gaming barcode vouchers

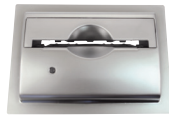
## Cash box

- 600 or 1,000 banknote capacity
- Can be secured on housing
- Support 2 locks (3/4" tubular) on door



## Bezels

### Vandal proof metal bezel



- Up-stack or Down-stack
- IP24 Compliant
- Outdoor applications

### Plastic Bezel

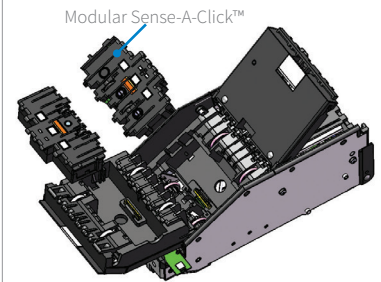


## Tools

- **Test Simulator**  
Simulator program helps to integrate and test product effectively
- **Firmware Update**  
Easy Firmware upgrade in the field can be performed by ordering smart-stick memory card or network download request
- Optional smart-stick programming device is available



## Sensor module



- Sense-A-Click™ is an all in one built-in removable sensor module
- Easy to replace or upgrade in the field

## Optional accessories

- You can order 12 pin COM connector and applicable power supply



## Technical Specifications

Size (W x H x D)	114 x 306 x 230 mm
Weight	Unit without cash box: 5.1 Kg, Cash Box 600: 1.95 Kg, Cash Box 1000: 2.4 Kg
Acceptance Rate	98% or higher***
Banknote Sensors	LCD 22" Open Frame LED VGA/DVI (16:10 or 16:9) Fully Supports 1920x1080 (Full HD) With Optera Touchscreen 3M controller
Banknote Specification	Four ways, 62 ÷ 82 mm wide, 124 ÷ 172 mm long
Escrow	One banknote
Bezel	Indoor Durable Plastic or Outdoor Metal
Protocols Supported	CCNET, Serial, ID003, V2.2, VFM
Firmware update	Smart-Stick memory card or Network Downloadable
Power Consumption	12 Vdc: 2.0 A, 24 Vdc: 1.0 A
Temperature	Operating Temperature: 0° to 50° C Storage Temperature: -30° to +60° C Humidity: 30% to 95%