

FM3080 Hind Stationary Scanners



Features

Snappy on-screen barcode capture

The FM3080 Hind is armed with Newland's sixth-generation of UIMG® technology. This CPU-based scanner excels at reading on screen barcodes that contain a large amount of data

Instantvisual feedback

With up to 4 color options available, the white scanning window of the FM3080 Hind can light up each scan. It can be programmed for different barcodes, a successful read, or to match your company brand

Small form factor

Dimensions of 78.7 x 67.7 x 47.5mm make the FM3080 Hind the smallest of the FM30 series. As a result, it takes up minimal space in a kiosk or at the POS

IR and light sensors

In order to achieve higher productivity, the FM3080 Hind has a combination of an IR sensor and light sensor. This combination creates improved sensitivity in activating the scanner to scan the presented barcode

IP65 sealing

The FM3080 Hind possesses a high IP-rating of IP65, making it resistant to water and dust

Application Scenarios

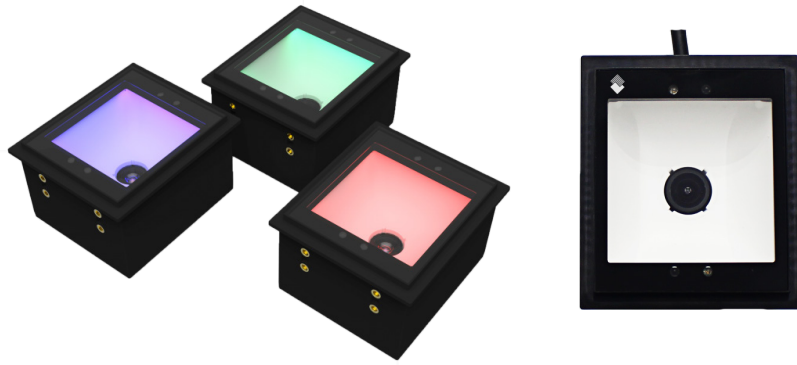


Access Control

Mobile Payment

Self-Service

Transportation



Technical Specifications

Performance	Image Sensor	800 x 800 CMOS
	Illumination	White LED
	Minimal Print Contrast	25%
	Scan Angle Roll	360°
	Scan Angle Pitch	±40°
	Scan Angle Skew	±40°
	Field of View Horizontal	74°
	Field of View Vertical	74°
	Scan Modes	Sense Mode, Continuous Mode
	Scan Window	50mm x 50mm
Data capture	1D	EAN-8, EAN-13, UPC-A, UPC-E, ISSN, ISBN, Codabar, Standard 2 of 5, Code 128, Code93, ITF-6, ITF-14, GS1 Databar, MSI-Plessey, Code 39, Interleaved 2 of 5, Industrial 2 of 5, Matrix 2 of 5, Code 11, Plessey, etc.
	2D	PDF417, Data Matrix, QR Code, Micro QR Code, Aztec, etc.
Physical	Dimensions (mm)	78.7(W) x 67.7(D) x 47.5(H)mm
	Weight	132g
	Interfaces	RS-232, USB
	Notifications	Beep, LED indicator
	Input Voltage	5VDC±5%
	Current@ 5VDC Operating	185mA (typical), 193mA (max.)
	Power Consumption	869mW (typical)
Environmental	Operating Temperature	- 20°C to 60°C (-4°F to 140°F)
	Storage Temperature	- 40°C to 70°C (-40°F to 158°F)
	Humidity	5% to 95% (non-condensing)
	Electro Static Discharge (ESD)	±15 kV (air discharge), ±8 kV (direct discharge)
	Sealing	IP65
Certifications	Certifications	FCC Part15 Class B, CE EMC Class B