

Technical Documentation



Coin changer
currenza 

Technical data

02.13 Schn/Roe
Version 1.4
DB.C2TD-EN



Table of contents

1	About this datasheet	5
	Additional technical documentation	5
2	Device data	6
3	Mounting dimensions	8
	View from front	8
	View from rear	9
	View from above	10
	View from below	10
	View from the side	11

1 About this datasheet

This datasheet provides all relevant

- c² device data and
- mounting dimensions on the basis of drawings



This datasheet does not describe the whole functional range of the coin changer currenza c² or HENRI service tool. In order to be able to use the whole functional range of the devices safely as well as to configure all possible functions, all short reference guides and descriptions for the NRI changer currenza c² and the HENRI service tool must be read carefully (PDF download at www.craneps.com, "Support").

Additional technical documentation

Apart from the datasheet you already have, there is further documentation for the currenza c² and service module, e.g. about service work or configuration. All product descriptions are available as PDF at www.craneps.com, "Support".

2 Device data

Supply voltage	Executive: 24V AC BDV: 18V to 43V DC MDB: 18V to 43V DC MDB battery operation: 11V to 43V
Power consumption	Standby mode: 2.5VA max. Coin acceptance: 16.0VA max. Coin payout: 16.0VA max./motor (48VA max. when paying out with all three motors) <u>Battery operation:</u> Sleep mode: < 0.5µA Standby mode: < 2.5VA (wake-up mode)
Temperature range	-25°C to +80°C
Temperaturr change	Max. 0.2°C/min.
Relative humidity	Up to 90%
Condensation	Not permitted
Machine interface	Serial MDB interface (Multi Drop Bus) for slave operation/ Serial BDV interface (Bundesverband der Deutschen Vending-Autmatenwirtschaft e.V. = association of German vending machine industry) for master operation/ Serial Executive interface for master operation/ Serial JVI interface (Japan Vending Interface) for slave operation/ RS-232/USB PC interface/ Combinations: MDB + BDV MDB + Executive
Coin acceptance	16 coin types max. (of these, up to three tokens) in 24 channels Coin diameter: 15–32.5mm Coin thickness: 1.5–3.5mm
Coin payout	Max. 6 coin types from a tube cassette Coin diameter and thickness depend on tube cassette in use.

Possible payout combinations:

Coin diameter	Tube					
	A	B	C	D	E	F
29.0–32.5mm	✓					
26.5–29.0mm	✓		✓			✓
24.5–26.5mm	✓		✓		✓	✓
23.0–24.5mm	✓	✓	✓	✓	✓	✓
21.5–23.5mm	✓	✓	✓	✓	✓	✓
20.0–21.5mm		✓	✓	✓	✓	✓
18.5–20.0mm		✓	✓	✓	✓	
17.0–18.5mm		✓		✓	✓	
16.0–17.0mm		✓		✓	✓	
15.0–16.0mm		✓		✓		

Device dimensions

Height: 377.10mm

Width: 137.75mm

Depth: 80.00mm (81mm with pressed return lever)
(for mounting dimensions see Chap. "Mounting dimensions")**Mounting position**

Vertical, max. deviation: ± 2°

Directives applied

EMC: 2004/108/EC

EN 55 014-2 (interference resistance)

EN 55 022 (interference emission)

Machinery: 2006/42/EC

R&TTE: 1999/5/EC (Radio and telecommunications terminal equipment)

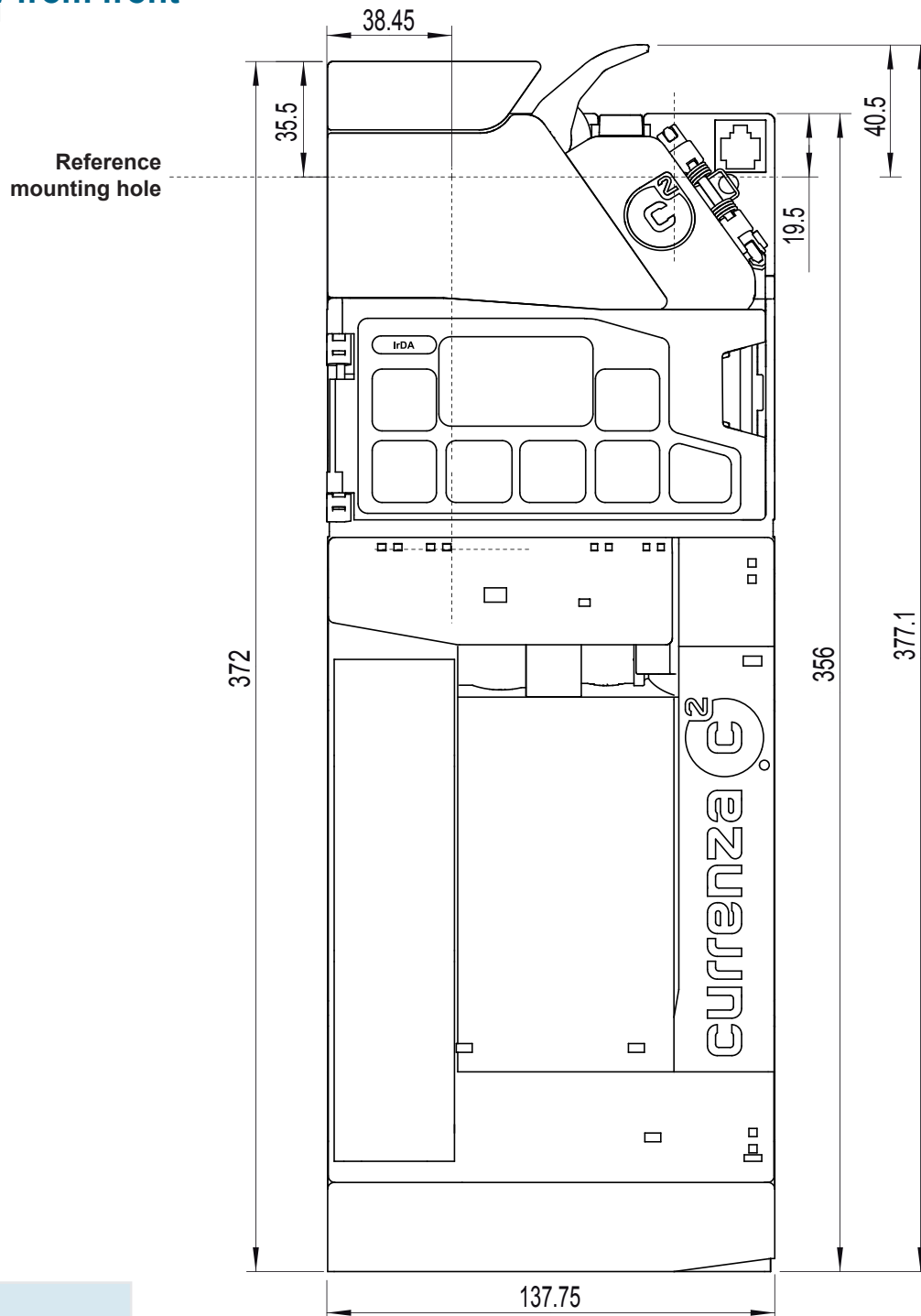
(cf. Declaration of Conformity)

3 Mounting dimensions

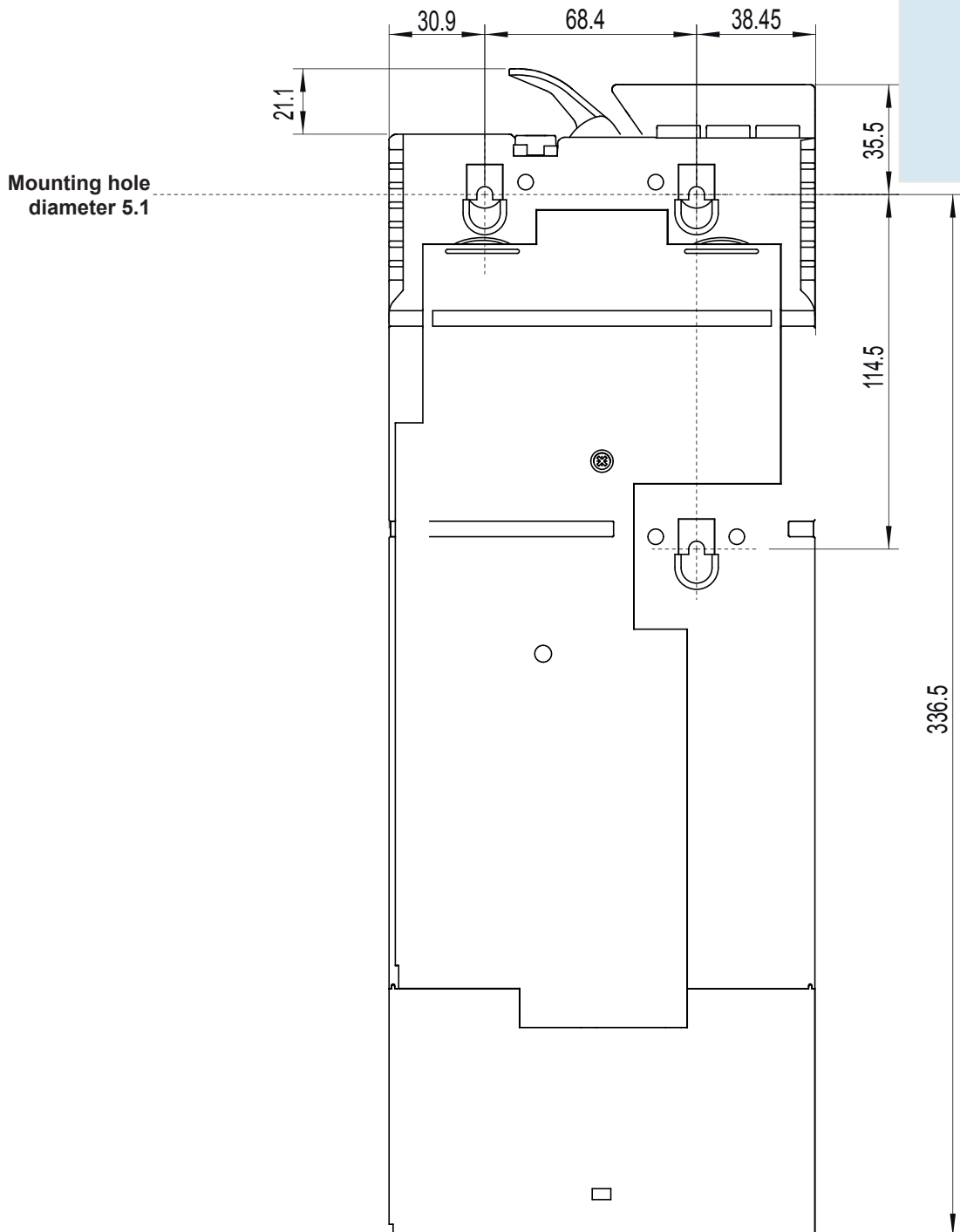


Are you interested in a 3D solid model in Step format?
No problem: contact us

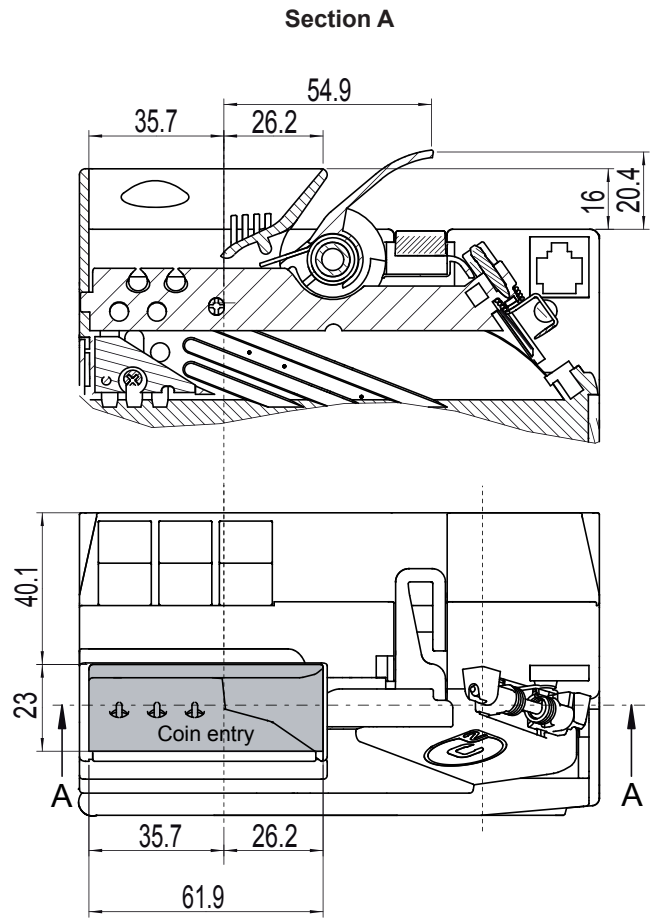
View from front



View from rear



View from above



View from below

