

# Coin Entries

## For Application on Flat Surfaces and with Various Inclinations

Devices in different colours and sizes for inserting the coins. Some models are equipped with lighting to attract more attention.



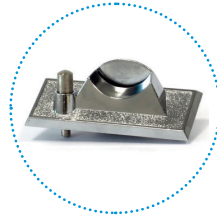
Standard coin entry for flat surfaces. Available in chrome or gold finish, with coin reject lever



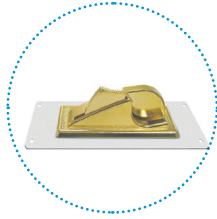
Adjoining coin entry for flat surfaces. Available in chrome or gold, with coin reject lever



Coin entry for flat surfaces. Available in black ABS, with coin reject button, in the lengths of 7-20-30 and 45 mm



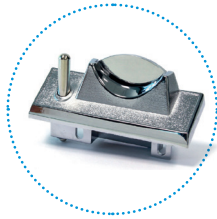
Top coin entry for flat surfaces. Available in chrome plated steel, with coin reject button



Coin entry for surfaces with a 30° inclination. Available in chrome or gold finish, with coin reject button



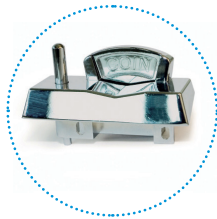
Coin entry for surfaces with a 30° inclination. Available in black, chrome or gold finish, with a coin reject button and in lengths of 42.5 – 62.8 mm



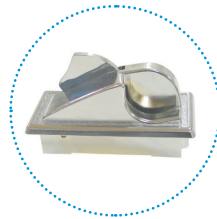
Coin entry for surfaces with a 30° inclination. Made of die-cast material with a coin reject button and in lengths of 42.5 – 62.8 mm



Standard coin entry for inclined surfaces. Solid and robust, it is made of chrome plated steel, with coin reject button. It accepts coins up to 3 mm thick



Cast metal coin entry for surfaces with a 15° inclination. Characterized by its sharp lines and catchy design



Coin entry for surfaces with a 30° inclination. It is available in chrome plated steel, with a coin reject button and luminous "COIN" inscription