

## Advance<sup>®</sup> SC Series Bill Validator

### Advanced note acceptor performance

SC Advance is specifically designed to meet the demanding needs of retail cash management, cash deposit systems, gas pumps, self checkout or kiosk and security applications. Its advanced recognition technology, its great speed and the increased capacity to accept up to 100 different currencies and denominations make it the best choice in the market. Design to perform optimally, SC Advance is equipped with industry-leading features and proven technology. Each product can be supported for audit, download and configuration with CPI Cashflow™ STS PC-based support tools.

#### Features

- High acceptance rate: 98% or greater
- New recognition system that provide a second barcode sensor to improve global ticket acceptance rates and offer 4-way ticket acceptance
- New note transportation system enables currency transaction in all conditions and decreases the risk of jam. Smooth short and tall note path is sealed against fluid and dust
- Accepted banknotes: 62 ÷ 83 mm width and 120 ÷ 166 mm length (standard cash box), 120 ÷ 177 mm length (extended cash box)
- Notes insertion: up to 100 notes, 4-way face up and down
- Barcode coupons insertion: 2-way face up
- Cash-box constructed of a durable, high-impact plastic with a welded design
- Bezel options: Bunch Note Feeder (BNF), Universal, Coin resistant, other
- Traffic light LEDs provide front-line at machine diagnostics
- Interfaces: multiple serial protocols and USB
- Robust design for a better durability. Extremely durable cashbox and protected internal mechanisms and components
- Flexibility in mounting options, thanks to the heavier gauge steel in chassis
- Easily updates through interface cards



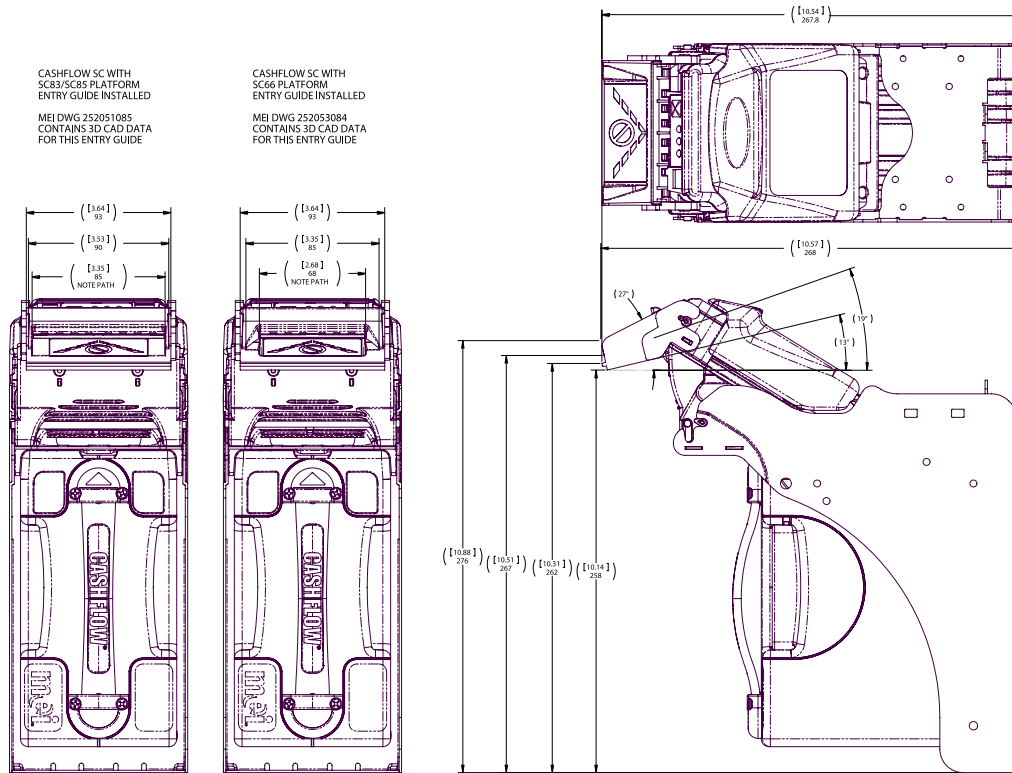
Diagnostic LEDs, configuration button and USB port located in the front face of the validator for an easier access



Different bezel option



## Technical Schematics



Unit of measure: mm

## Versions

- SC: 600 notes in the cashbox
- SCM: 900 notes in the cash box
- SCL: 1,200 notes in the cash box
- SCXL: 2,200 notes in the cashbox

## Optional accessories

- PPM Advance  
Portable programming module (PPM) for the control of the products
- MEI Easitrax Soft Count  
Hardware and software solution that acts as interface between the casino floor and the soft counting allowing casinos to track assts and maximize control



SC cashbox

SCM cashbox

SCL cashbox

SCLX cashbox

## Technical Specifications

Dimensions (LxHxW)	SC Advance 162 x 303 x 229 mm SCM Advance 206 x 303 x 273 mm SCL Advance 273 x 303 x 340 mm SCXL Advance 419 x 328 x 486 mm
Weight	4 Kg + 1,5 Kg cashbox
Transaction speed	2.3 seconds to stack escrow
Power Supply	12V – 28 Vdc
Current consumption	Stand-by: 10 W Accepting: 30 W Stacking: 70 W
Operating temperature	0° ÷ 60°C
Storage temperature	-30° ÷ 70°C - 5 - 95% RH (humidity non condensed)