



# **Nanoptix** **PayCheck™ NextGEN**

## **Firmware Upgrading & Recovery Instructions**

Nanoptix Inc  
Dieppe, NB, Canada  
E1A 1P6  
1-888-983-3030  
[www.Nanoptix.com](http://www.Nanoptix.com)

**NANOPTiX**

## Section 1: Downloading and Installation

### NOTES:

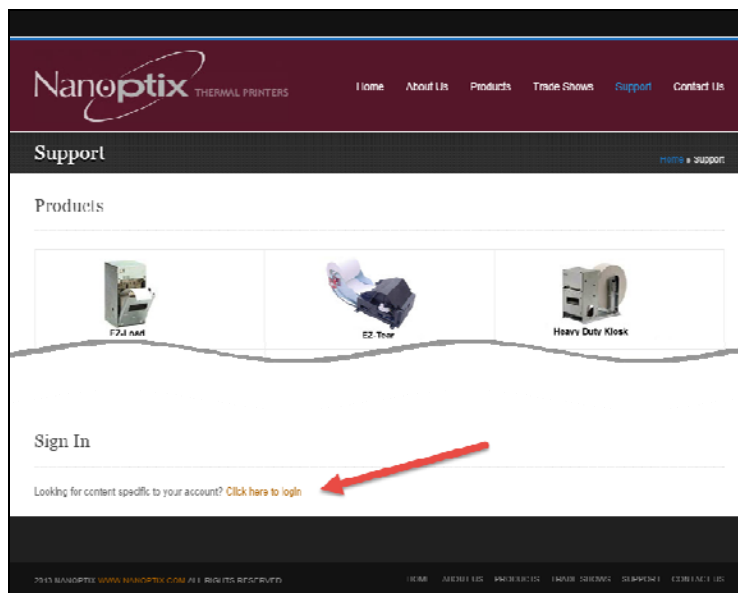
- If you already have a firmware \*.zip package in your possession then there is no need to visit the Nanoptix website you can skip directly to Step 5.
- A USB flash drive (or similar USB mass storage device) is required in order to complete the process. The storage capacity of the drive must be between 512MB and 32GB



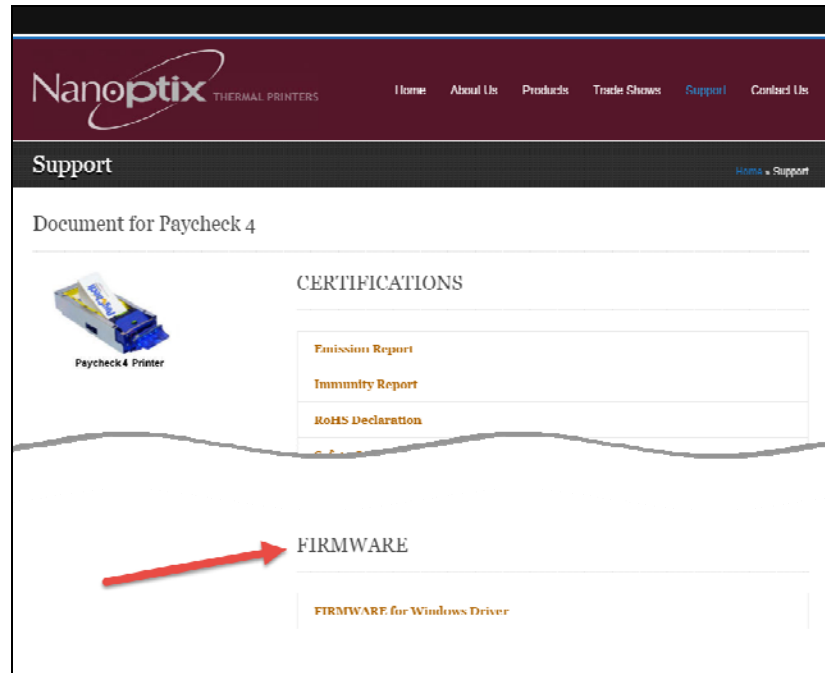
ESD protection (such as a wrist strap) must be used anytime a PCB is exposed



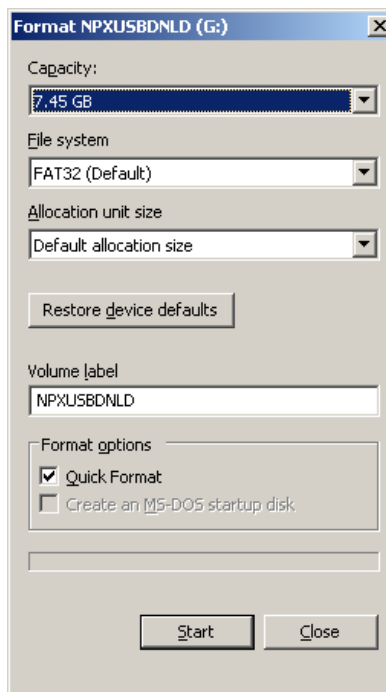
1. Go to [www.nanoptix.com](http://www.nanoptix.com) and select the "support" section.
2. Login using
  - Username: **(Please contact Nanoptix for unique Username)**
  - Password: **(Please contact Nanoptix for unique Password)**
  - Click the "login" button



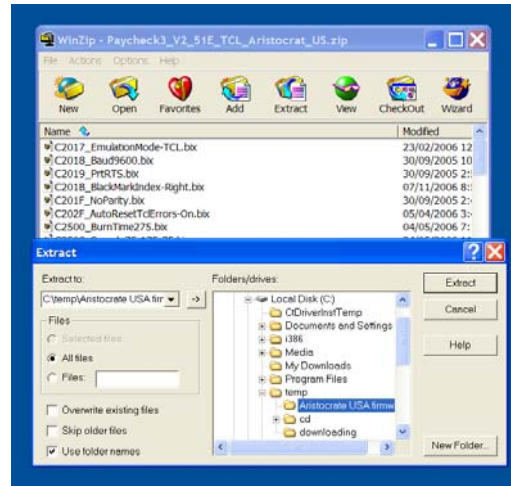
- Once logged in, click on your product and then navigate to the **firmware** section.



- Select the desired firmware and download it to a known location on your local disk.
- Prepare the USB flash drive by inserting it into one of your computer's USB ports.
- Format the USB flash drive using a FAT32 file system, set the allocation unit size to the default setting and change the volume label to "NPXUSBDNLD"



7. Extract the whole content of the “.zip” file previously downloaded in step 4 to the USB flash drive that was prepared previously in step 6 using “Winzip” or the “.zip” extractor of your choosing.



8. Make sure the PayCheck™ NextGen printer is OFF then Insert the USB flash drive in one of the 3 USB host ports and power ON the printer.



9. On power up, the red LED will be illuminated, after 15 seconds, the download will start. As confirmation, the printer will emit a beeping sound at approximately a 1 second interval and the green LED will blink at the same speed.
10. Since only the sections of firmware that change will be downloaded, the process takes anywhere between 1 second and 6 minutes. Once complete, the speed of the LED and beeping will increase to 3 times per second.
11. Once the rapid beeping is heard, the USB flash drive can be removed. The printer will reset and boot up with the newly downloaded version of firmware. This process takes approximately 20 seconds, the illumination of the green LED is a confirmation that the printer is ready.  
**Note:** Do not disconnect power or communication until the download is complete.

12. As verification a **power on test ticket** can be printed. To print the test ticket, the printer must be powered "ON" while holding the paper feed button for up to 15 seconds. A status ticket similar to below will be printed. Pressing the button again will result in blank tickets. This ticket can be used to verify the *firmware version*.

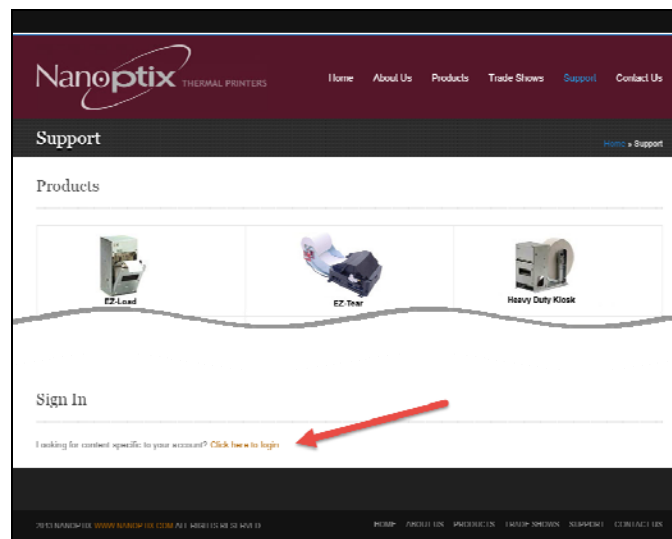
```
Model: PAYCHECK NextGen
Firmware: NPG-9.99Z (0x6D00)
Printer Driver Ver: 1.0.1.1
SETTINGS
COMMUNICATION
  Protocol: NTL
  Interface: Serial
  Serila Settings: 9600,8,NONE
  Handshaking: XON + RTS
  Print mode: Page
NETWORKING
  eth0 99.99.99.201
PRINT CONTROL
  Speed: 200 mm/sec
  BurnTime: 300 uS
  Motor Current: 58%
PRINTER ENVIRONMENTAL CONDITIONS
  Voltage: 24.7 Volts
  Temperature: 25 Celcius
SYSTEM RESOURCES
  FLASH Used=00000
    Free=65535
LIBRARY INVENTORY (Satandard)
  Tpl: 0, 1, 2, 4, 4, 5,6,7,8,9,A,B
  Rgn 1, 2, 3, 4, 5, 6, 7, 8, h, 9, A, B, C, D, E, F,
    G, I, J, K, L, N, O, P, Q, R, S, T, U, Z, X, a,
    b, c, d, e, f, g, I, j, k, l, m, n, o, p, q
  Gfx:
LIBRARY INFORMATION
  Board: 209022-0001R-04
  Board ID: 5P00122
  Printer ID: NG0003C
  Date Code: 20160505

*S|0|PAY-4.82H|@|@|@|@|@|P|*
```

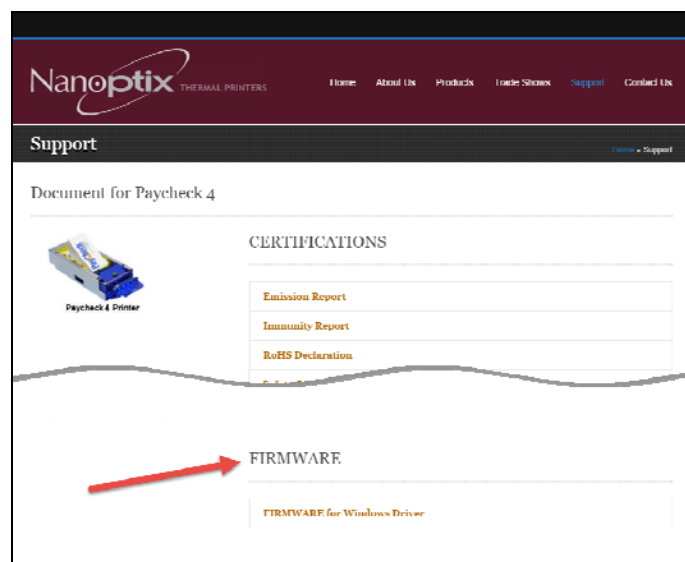
## Section 2: Restoring printer's firmware

- A micro SD is required in order to complete the process. The storage capacity of the card must be between 512MB and 32GB
- Win32 Disk Imager is required in order to prepare the micro SD card. The Win32 Disk Imager software can be downloaded from <https://sourceforge.net/projects/win32diskimager/>

1. Go to [www.nanoptix.com](http://www.nanoptix.com) and select the "support" section.
2. Login using
  - Username: **(Please contact Nanoptix for unique Username)**
  - Password: **(Please contact Nanoptix for unique Password)**
  - Click the "login" button

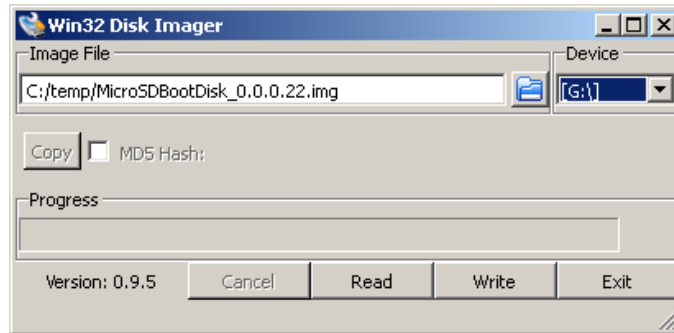


3. Once logged in, click on your product and then navigate to the **firmware** section.

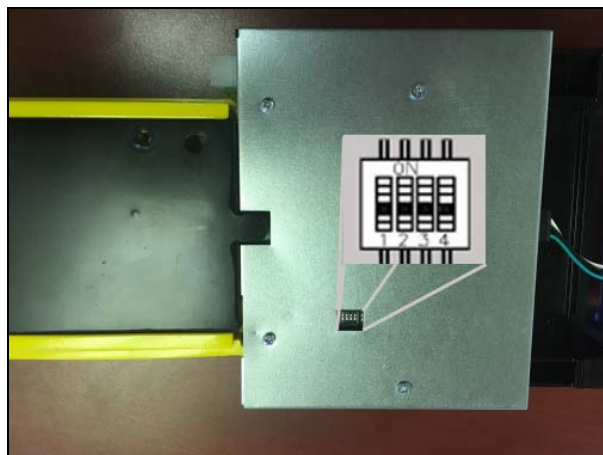


4. Select the desired Image file (XXXXX.img) and download it to a known location on your local disk.

5. With the Paycheck NextGen powered off.
6. Insert the micro SD card in your card reader and note which drive letter is associated with the micro SD card when it's connected. (Example "G:"). Then start the win32 Disk Imager software.
7. Navigate to and select the image file that was downloaded previously in step 4. Select the Device that corresponds to the Micro SD card that was inserted in step 5.



8. Click the Write button, when prompted about overwriting the disk, click yes. Once complete, eject the micro SD card.
9. On the underside of the Printer put dip Switch 1 into the ON position. This will force the Printer to boot from the Micro SD recovery card.



10. Insert the micro SD recovery card into the micro SD slot on the front of the printer. An insert the Nanoptix USB download drive (USB flash drive created in section 1) into the Front USB Host port of the printer.
13. Power on the printer. the red LED will be illuminated, after 15 seconds, the download will start. As confirmation, the printer will emit a beeping sound at approximately a one second interval and the green LED will blink at the same speed.
14. The process takes anywhere between 1 second to 6 minutes. Once complete, the speed of the LED and beep will increase to 3 times per second. At that point, power off the printer and remove the USB flash drive and micro SD cards. Restore dip switch 1 to the OFF position
15. Power on the printer and verify the firmware downloaded correctly.