

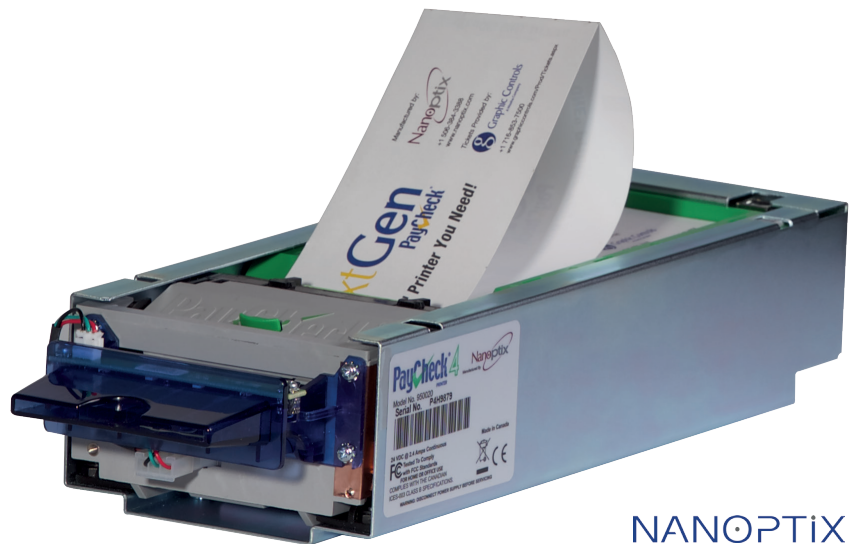
PayCheck® 4™ Fastest. Smartest. Toughest.



Only the PayCheck® 4™ Thermal Printer from Nanoptix can print a ticket in just 0.6 seconds! In fact, the PayCheck® 4™ is so lightning fast, there's no need to rely on a "burst", like some other, lesser printers do. Also, the PayCheck® 4's 8 MB of standard memory enables you to store more fonts, images, logos and barcodes, so you can personalize your players' gaming experience. With a lifespan of approximately 640,000 TITO tickets, its print head has the longest life of any in gaming.

Features

- Most standard memory in gaming printers
- Standard casing footprint
- Unique illuminated anti-jamming bezel
- RoHS compliant
- Truly hot swappable
- Easy paper path access
- Durable, intuitive, modular design
- Diagnostic/firmware upgrade USB service port



NANOPTIX

Benefits

- ✓ Greater customer satisfaction
- ✓ Better reliability and lower overall cost
- ✓ Let you personalize with fonts, images and logos
- ✓ Fast plug-and-play replacement
- ✓ Reduces paper jams for more uptime
- ✓ Easy replacement without powering down
- ✓ Fast & easy maintenance
- ✓ Easy access to all major components
- ✓ Easy field service and upgrades
- ✓ Usable in all jurisdictions worldwide

Anti-jamming bezel



Modular design



Printing characteristics

- 250 (9.8") per second in text mode (monochrome)
- 125 mm (5") per second in two-color mode
- 520 dots per line 203 dots per inch
- 62.5 mm (2.46") print zone width (near-edge printing)
- 8 dots/mm horizontal and vertical

Communications interface options

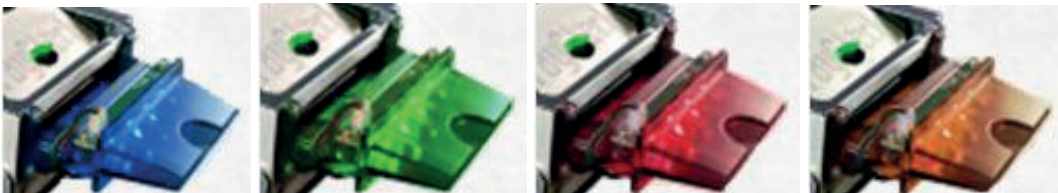
- Bidirectional RS-232 (up to 57.6 kbps)
- Dedicated USB 2.0 Communication - Dedicated USB 2.0 Maintenance Service Port
- Netplex protocol - GDS protocol - Windows driver

Reliability

Printhead: 100 km or 100 million pulses for monochrome (approximately 640,000 TITO tickets) 50 km or 50 million pulses for 2 color

Configurable Options

Multiple bezel color options



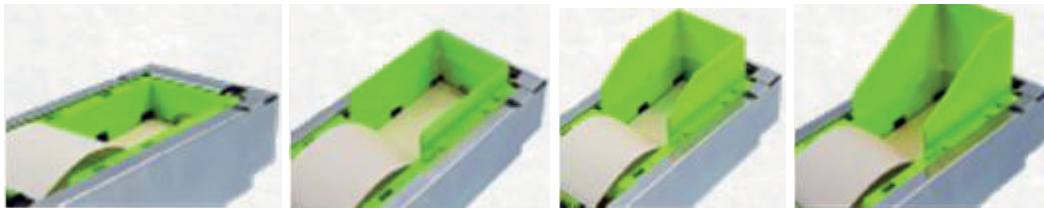
Blue

Green

Red

Amber

Ticket tray note sizes



200 (default)

400

600

800

Technical Specifications

Printer

Size (HxWxD)	67x113x286 mm
Weight	1.5 kg (3.3 lbs)
Power requirements	24 Vdc at 2.4A Maximum (excluding exit lamp) Exit lamp: 24 Vdc 20mA required by lighted bezel Bezel port can sync up to 2A
Operating temperature	0 to 70°C (32 to 158°F)
Storage & shipping temperature	-20 to 75°C (-4 to 167°F)
Operating humidity	5 to 90% RH (non-condensing)

Technical Specifications

Paper/Media

Type	Top-coated thermal sensitive (Qualified for Kanzaki TO381N, Appleton Royale, Nashua Corporation NT 10149)
Ticket (W x L)	65 (2.56") x 156 mm (6.12")- TITO format
Ticket thickness	0.114-0.127 mm (0.0045-0.005")
Perf. Strength	1.59 +/-0.27 kg (3.5 +/-0.6 lbs)
Monochrome or three 2-color choices	red/black, blue/black, green/black