

PayCheck[®] High Speed Couponing[™]

Specifically Designed for Printing Promotional Coupons



NANOPTIX

Features

- Prints in Sequence
- Prints a Ticket in 1.2 Seconds
- Supports multiple fonts and barcodes
- Barcodes: Interleaved 2 of 5, Code 39, Code 93, UPC-A & UPC-E, Codabar, EAN 8 & EAN13, Code 128
- Bitmap graphics: portrait, landscape and page mode printing
- Multiple sensors: Top of Form, Ticket In, Ticket Out, Ticket Low
- Real time operating system, DSP/BIOS
- 64 Mbit SDRAM, 16 Mbit Flash for storing Code, Fonts, Logos, Images etc.
- Print Head Life of 100 km
- Memory 2 MB Flash 8 MB RAM 1 Mbit EEPROM
- Host-controllable buzzer/alarm
- Status indicator lights
- Standard connectors (USB, RS232)
- USB Port
- Many emulations and protocols available

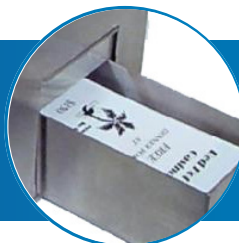
Benefits

- ✓ Easy to use configuration & diagnostic tools
- ✓ Downloadable firmware
- ✓ Rugged, intuitive design for durability and ease of use
- ✓ Power-up self-test

Lockable cover and rugged metal design

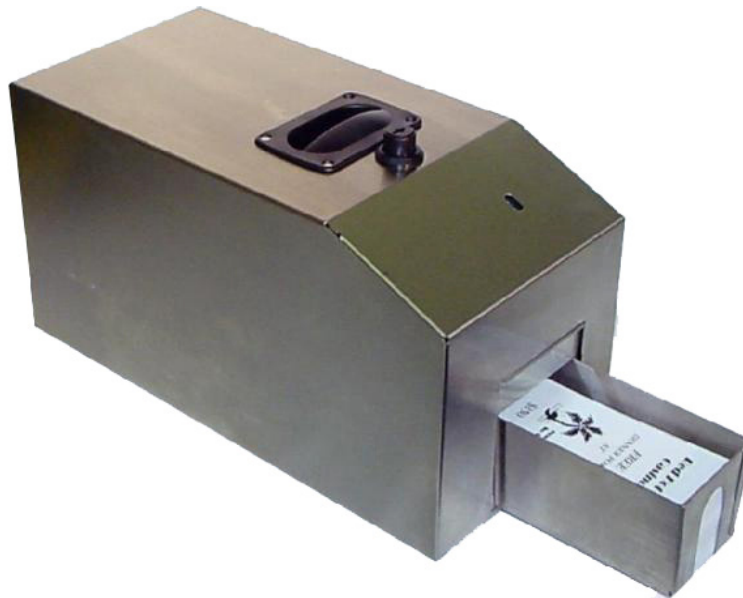


Automatically cuts and stacks 200 promotional tickets



USB and serial port





Printing characteristics

- Up to 200 mm (8 in.) per second in text mode (monochrome)
- 125 mm (5 in.) per second in two-color mode

Options Interface

- RS-232 (up to 57.6 Kbps), USB, Simultaneous 2 Port Capable (RS-232, USB)

Reliability

100 km or 100 million pulses for monochrome
(500,000 + slot-type tickets)
50 km or 50 million pulses for 2-color

Print Quality

- 500 dots per line
- 203 dots per inch
- 8 dots/mm horizontal and vertical
- 62.5 mm (2.46 in.) print zone width (near-edge printing)

Technical Specifications

Size (HxWxD)	178.8 (7") x 192.2 (7.5") x 474.9 mm (18.7") (with tray)
Weight	0.55 kg (1.21lbs)
Power requirements	24Vdc at 2.4A Maximum Exit Lamp: 24 VDC at 2A
Environmental Operating temperature	0° to 50° C
Storage & shipping temperature	-20° to 60° C
Operating humidity	5 to 90% RH (non-condensing)

Technical Specifications

Paper/Media

Type	Top-coated thermal sensitive
Ticket W x L	65 (2.56") x 156 mm (6.12")
Ticket thickness	2.4 to 3.6 mils (54µm to 90µm)
Slot-ticket format	Monochrome or 2-color Power